

**Recrutamento Coordenado 2024 – BRASIL**

**PROMOCAO IN SITU (MAIO 2024)**



## **Nosso Recrutamento**

## **Nossas Escolas**

Institut National des Sciences et Industries du Vivant et de l'Environnement (**AgroParisTech**)

École Nationale Supérieure d'**Arts et Métiers** (ENSAM)

École Nationale Supérieure de **Chimie** de Paris (Chimie ParisTech-PSL)

École Supérieure de Physique et de Chimie Industrielle de la ville de Paris (**ESPCI Paris-PSL**)

Institut d'Optique Graduate School (**IOGS**)

École Nationale Supérieure des **Mines** de Paris (ENSMP)

## **Informações Práticas**

# Nosso Recrutamento

➤ **NAO SE TRATA DE UM CONCURSO :**

**Trata-se de um processo de seleção**, realizado conjuntamente com os parceiros no Brasil.

➤ **NAO ENVOLVE EQUIVALENCIA DOS ESTUDOS NA FRANCA E NO BRASIL :**

Cada estudante se candidata a tópicos disciplinares / modelos pedagógicos / estágios que, a priori, **não estariam ao seu alcance na universidade de origem.**

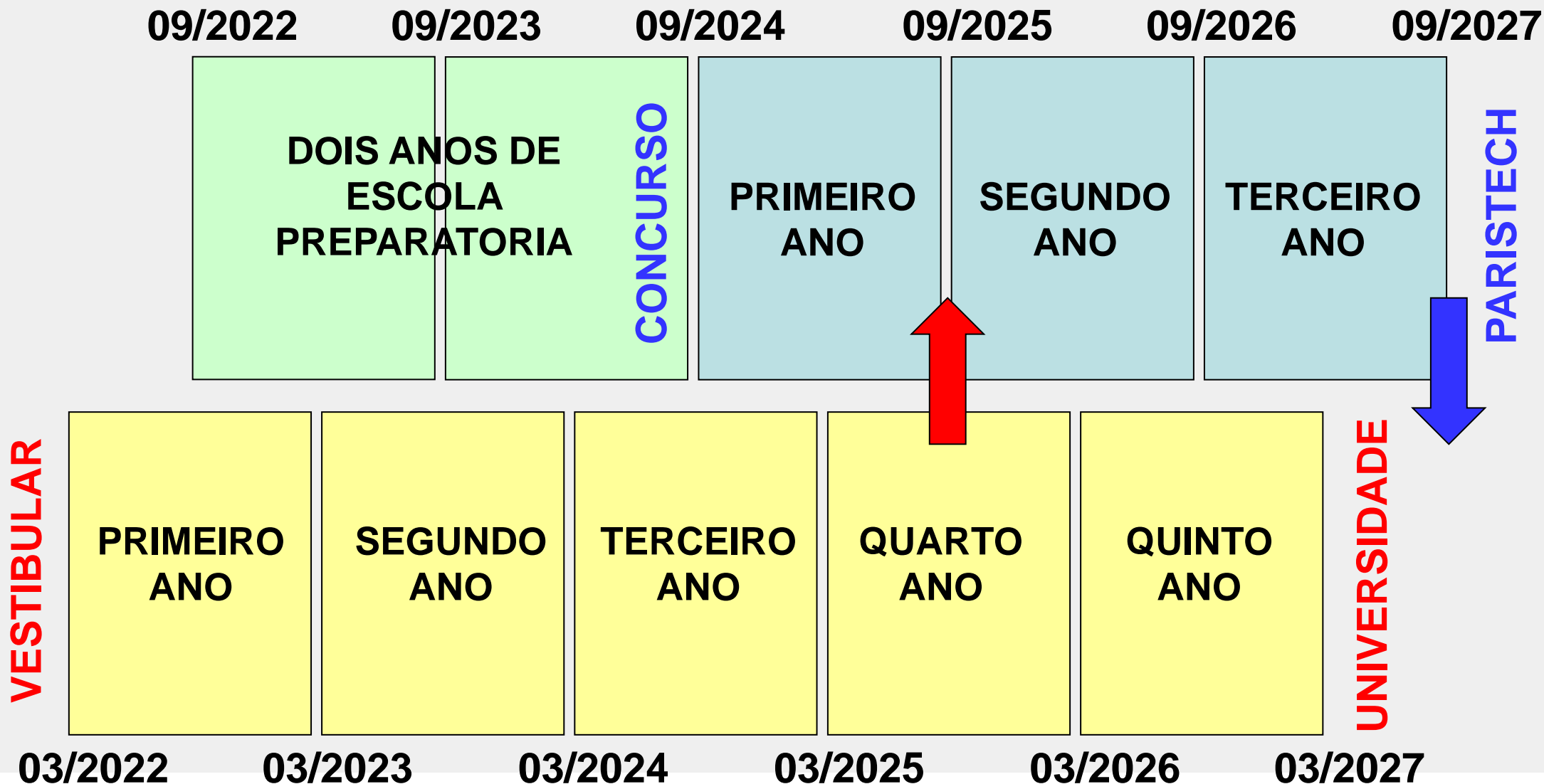
➤ **BUSCA UMA BOA ARTICULACAO ENTRE PARCEIROS :**

Após seu retorno à universidade de origem, cada estudante não deveria retomar seu curso de engenharia / ciências exatas exatamente no ponto em que o deixou... (>> importância dos acordos, dos programas de estudos, **minimizando na medida do possível a duração final requerida para a obtenção dos dois diplomas**).

➤ **NAO ENVOLVE A ATRIBUICAO DE BOLSA DE ESTUDOS :**

**Uma vez concluída a fase de seleção**, cada estudante participa de um ou mais processos de candidatura à uma bolsa de estudos (Eiffel na França, CAPES no Brasil, fundações das escolas, bolsas industriais, etc).

# Calendarios escolares



# « Grandes Ecoles » e principais especialidades

					 	
Mathematics & applications						✓
Information and communication sciences and technologies					( ✓ )	✓
Life sciences, Food engineering	✓		✓	✓		
Earth sciences and environmental engineering	✓					✓
Physics, optics				✓	✓	✓
Chemistry			✓	✓		
Energy		✓	✓			✓
Material science, mechanics and mechanical engineering		✓	✓	✓		✓
Industrial engineering		✓				✓
Transport		✓				✓
Economics and social sciences, management, statistics	✓					✓

# The added value of the « Diplôme d'ingénieur »

## Learning through

Practical exercises  
(+30-50% of the  
courses)

Internships

defining and solving problems designing,  
prototyping, testing and validating S&T solutions,  
processes, products, systems, services

Team work  
Project  
management

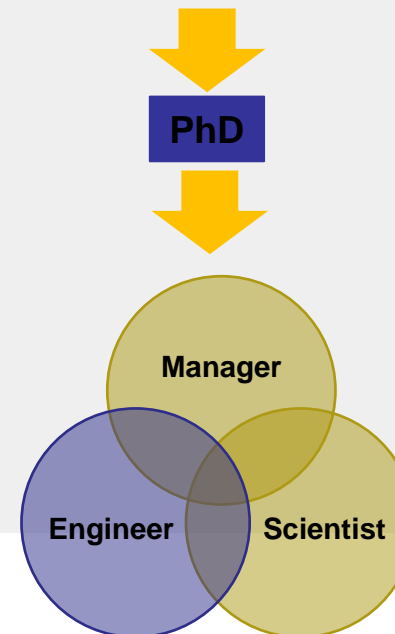
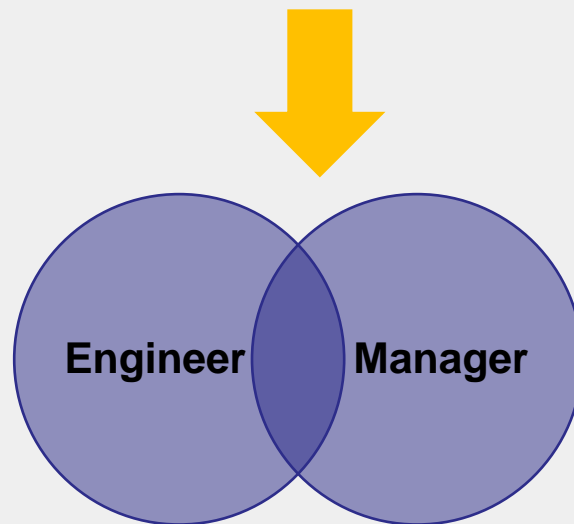
Research-driven  
teaching

in close contact to businesses

The « diplôme d'ingénieur » enables you to work in any domain (production, R&D, consulting, services)

The « diplôme d'ingénieur » opens very interesting professional opportunities with very good wages

The « diplôme d'ingénieur » opens the doors to an international career



# The best way to international businesses...



# AgroParisTech







AgroParisTech is a French public institute with a rich history that spans over **200 years**. Its **forward-looking approach** is aimed at addressing the **main global challenges of the 21<sup>st</sup> century**:

- **Safeguarding our ecosystems**
- **Feeding populations**
- **Preserving natural resources**
- **Managing the environment in a sustainable way**

- Internationally renowned for the high quality of its training programs & research activities
- Research-based training
- Focus on innovation & entrepreneurship
- Two key missions:
  1. Offering high quality training to students and professionals in the different curricula delivered by AgroParisTech,
  2. Advancing scientific knowledge, in close association with public and private research centres, main relevant technical-vocational centres and industrial partners.

✓ **QS Top Universities** ranking in “Agriculture & Forestry” **2021: 1<sup>st</sup> in France, 3<sup>rd</sup> European wide and 4<sup>th</sup> Worldwide**

✓ **Shanghai Ranking’s “Academic Ranking of World Universities” 2023: 15<sup>th</sup> Worldwide as a part of the Université Paris-Saclay**  
As a leading French HEI in agricultural and environmental sciences and component institution of the Université Paris-Saclay, AgroParisTech is a key contributor to its success.

✓ **National ranking of all French HEI in Engineering 2024: 1<sup>st</sup> in the field of “Life Sciences”**

## 4 main fields of scientific expertise:

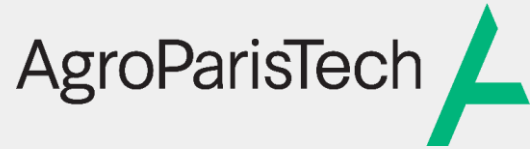
- Agricultural production and forestry
- Food and non-food processing
- Sustainable management of natural resources and the environment
- Human health



## 5 Education and Research Departments:

- Agronomy, Forestry, Water and Environmental Sciences and Technology
- Life Sciences and Health
- Sciences and Engineering for Food and Bioproducts
- Social Sciences, Economics and Management
- Modelling: Mathematics, Informatics and Physics

# Engineering Degree



## A wide range of choices during the second year (MSc1):

- 4 different study tracks
  - **Sustainable production, resources & territories**
  - **Food engineering, biomolecules & energy**
  - **Environmental Engineering & Management**
  - **Engineering and Health: human, bioproducts & environment**
- **Core-curriculum:** life sciences engineering, mathematic modelling, statistics, economic and social sciences, management
- 7 modules with a choice of **more than 100 course-units**
- **Apprenticeship track**

## Many opportunities during the third year (MSc2):

- **20 areas of specialization** (Agricultural development, Forestry management, Product design, Nutrition, Economics and company management, BioTech...)
- Possibility to join one of the **50+ Master programmes** offered by **AgroParisTech** and its partners
- Possibility to join a **Master programme** from **another institution**

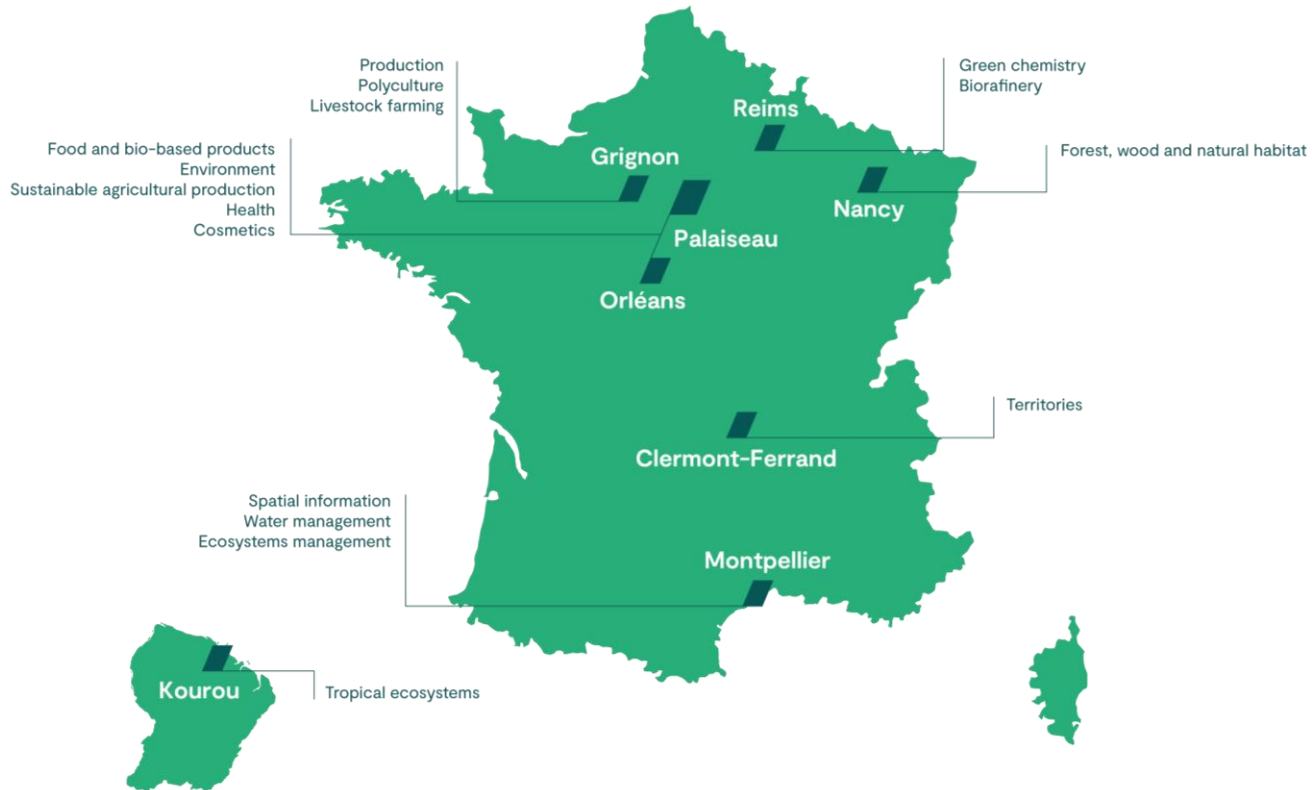
### And also:

- Team projects, sports, languages, etc.
- Compulsory international mobility:** 200 partnerships with 130 universities from over 52 different countries
- Compulsory internships:** **L'Oréal, Danone, Nestlé, Veolia, Suez...**

## Job prospects:

- +80%** of students get a job **less than 2 months after graduation** and **8%** pursue a **PhD**
- Entry level salary: **38K€/year**
- Main fields: **Consulting and Service** companies, **Food-processing** industries, Professional **Agricultural and Forestry** organisations, **Education and Research** (Public & Private), State and territorial administration...





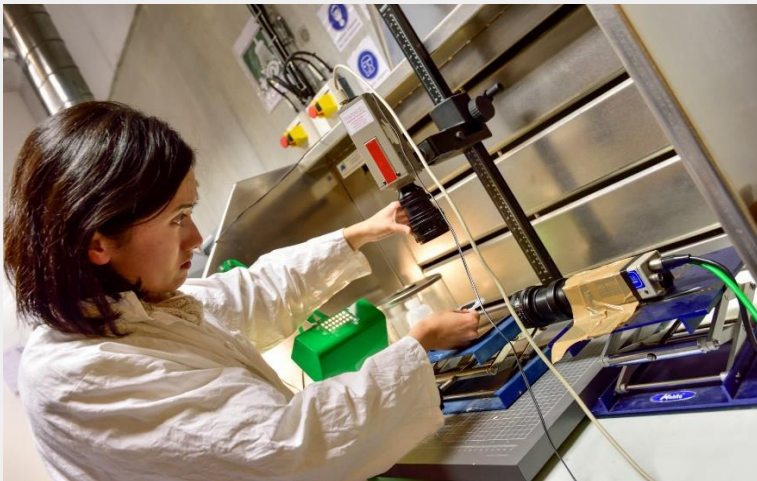
## Student Life

- AgroParisTech is composed of **7 campuses** located across France in attractive cities and with vibrant student life. Engineering students can especially study in **Palaiseau (Paris-Saclay), Nancy or Montpellier.**
- **2,300 students** (16% degree-seeking international students)
- Student organisations and events will shape your student life: sports organisations, cultural and professional venues, student unions, buddy programmes...
- AgroParisTech international students are given priority to rent a room in our student accommodations ideally located throughout our campuses **at affordable prices.**
- **Administrative support** from the International and European Relations Office (including for scholarships).

# Arts et Métiers



Talent booster for industry of the future, Arts et Métiers' mission statement: deliver solutions to the needs of every sector of industry



### Key figures

- 6000 students
- 1000 international students
- 170 partner universities worldwide

For over two centuries (1780), Arts et Métiers has been spearheading scientific progress and supporting each industrial revolution.

### COURSES ANTICIPATING SOCIETY'S TECHNOLOGY NEEDS from undergraduate to doctorate level

- ▶ Arts et Métiers ParisTech Grande École engineering programme (level 7)
- ▶ 10 Specialised engineering programmes (level 7)
- ▶ Bachelor's degree in technology (level 6)
- ▶ + 20 National master's programmes (level 7)
- ▶ Doctoral programme (level 8)
- ▶ Lifelong skills development (Specialised Masters...)

### EXCELLENCE LABEL FOR TRANSFERRING OUR RESEARCH TO THE INDUSTRIAL WORLD: Carnot Institute

Research applied to 5 major factory of the future sectors:  
Transport/ Energy/ Health tech/ Construction/Manufacturing

15 LABORATORIES pioneering scientific expertise in Industry 4.0 (corobotics, advanced manufacturing systems, innovation & production systems, virtual & augmented reality, biomechanics, additive manufacturing...)

- ▶ Member of EIT Manufacturing
- ▶ Six research chairs in health, environment, clean mobility and smart industrial systems
- ▶ Real-scale Technology platforms (20 Technology hubs)

## SUPPORTING TOMORROW'S ENTREPRENEURS

- ▶ Arts et Métiers **talent pipeline and incubator** for the high-tech industry
- ▶ **Training** : business creation & development expertise, technological innovation and entrepreneurship



[www.artsetmetiers.fr](http://www.artsetmetiers.fr)

## STRATEGIC PARTNERSHIPS WITH INDUSTRIAL ORGANISATIONS

**11 locations**, spread all over in France, for building even **closer ties and insights with industry**

- ▶ Workplace integration
- ▶ Training
- ▶ Innovation

📍 Arts et Métiers  
campuses  
Institutes



## Arts et Métiers ParisTech Grande École engineering programme

- ✓ **Strong background in Mechanical and Industrial Engineering**
- ✓ **Pedagogical approach combining theory & practice**
- ✓ **Multiple and varied choices of specialised final year courses**
- ✓ **Mandatory immersion in companies**

- ✓ **83,5%** work < 6 months after graduation; other **9,5%** pursue their studies
- ✓ **63%** students employed before graduation
- ✓ **Top sectors of employment:** Eng services & consulting (34%), transportation - aeronautics, automotive, rail (13%), construction (10%), ICT...
- ✓ **Top working functions:** Production & quality control (34%), R&D – Innovation (21%), Consultancy (15%)
- ✓ **Average entry salary 41.5K€/year**

### ➤ **2nd year - core courses** (all campuses):

#### **1 semester Mechanical and Industrial Engineering:**

*Solid Mechanics/ Materials/ Management/ Product Design/ Product Manufacturing/ Industrial Organisation/Project - Research*

#### **1 semester Energy and Industrial Engineering:**

*Electronics/Automatics/ Energetics/ Math – Computer Science/ System Design/ System Manufacturing/ Industrial Organisation  
Project - applied*

### ➤ **3rd year** (the campus depends on the specialised course):

#### **1st semester**

*Specialised course (to be chosen among over 33 offered) in the field of new energies for sustainable development, aeronautics and space eng., management of technological innovation, advanced materials, electrical eng., bioengineering, advanced manufacturing, production systems, virtual & augmented reality, additive manufacturing, fluid mechanics, mechatronics, business creation...*

*Management of the Logistic Chain/ Strategical Management*

*Project in laboratory*

#### **2nd semester**

*6-month internship in company (mandatory)*

*Throughout each year: Foreign Languages, Professional Project Initiative*



## 8 campus in France

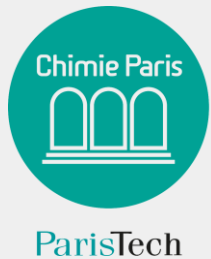
- International relations offices & administrative support, tutoring
- Halls of residence
- Documentation Center and IT room with Internet access
- Infrastructure (gymnasium, climbing wall,...) which allow students to take part in numerous team and individual sports
- National Students' association: sport (sailing, football, rugby, tennis, handball, golf, athletics, skiing, rally...), cultural, scientific, humanitarian or business activities (Shell Eco Marathon, robotics projects, Business lunches...)
- Biggest Alumni in Europe (34 000 alumni)
- Student & alumni mentoring

## WHY ARTS ET METIERS?

- One of the best and renown Engineering institution in France
- Get in touch with the industry and acquire business contacts. Arts et Métiers has strong links with companies and, with 11 sites, is close to the economic players. Each campus organises regular meetings with companies (business lunch...)
- Work on our real-scale technology platforms
- Prospect for a PhD at Arts et Métiers by making the most of our labs and research teams which offer a wide range of research areas
- Become part of the biggest Engineering Alumni Association in Europe
- Experience the French language and culture and take advantage of our sites.

**Chimie**





# Fostering Talents for Tomorrow's Chemistry



Henri Moissan

**Charles Friedel**  
Founder  
(1896)



C. Friedel

**Nobel Prize**  
**Henri Moissan**  
Former Director



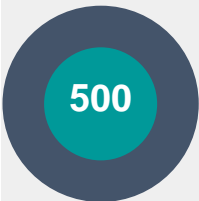
**Eugène Schueller,**  
Alumni  
(1909)



**L'ORÉAL**

Highly selected students  
(50% of women)

Researchers, Professors &  
Associate Professors



**>20%**  
international  
students



**40%**



Practical training



**20%** Business, management and  
human skills

**12 months**



**Mandatory internship**  
(engineering curriculum)



training by research  
**7 pub. per week**

# Chimie ParisTech | PSL belongs to a world class University



#1

#47



#2

#40



#1

#26

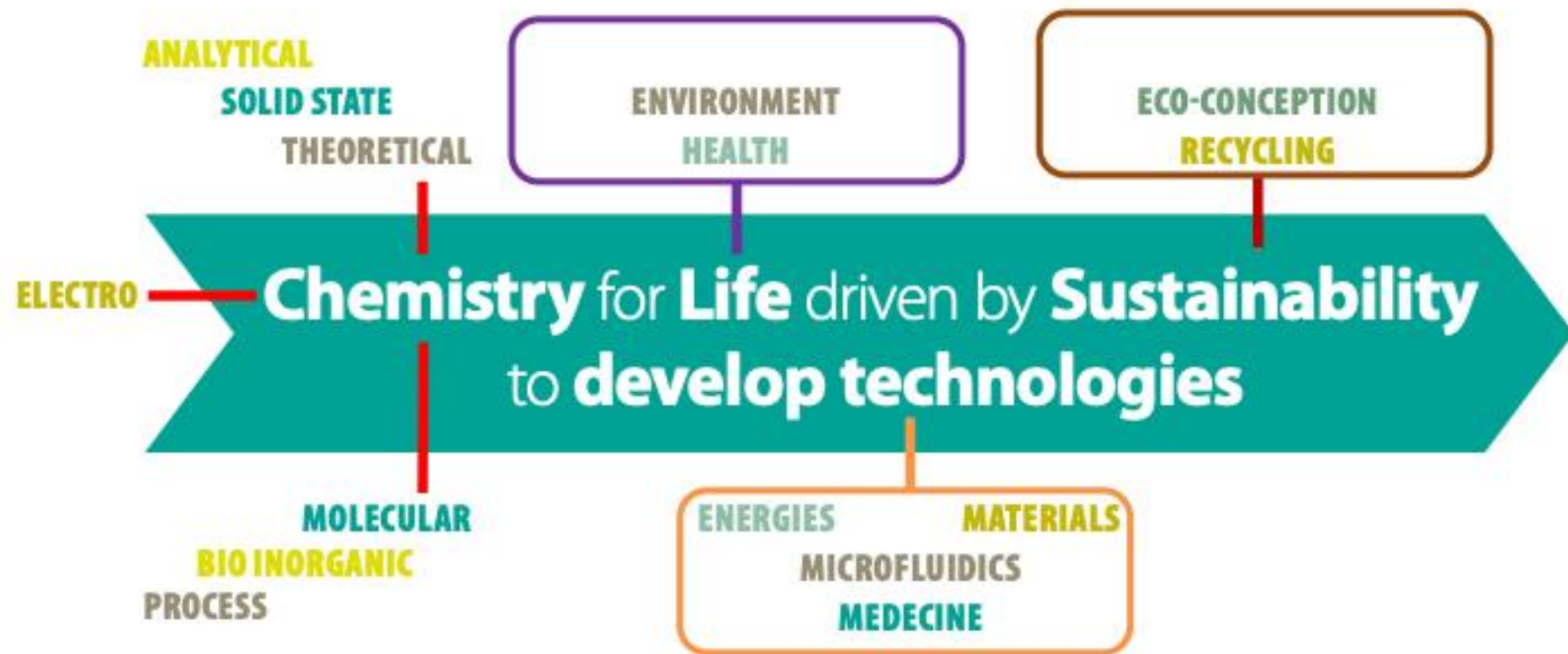
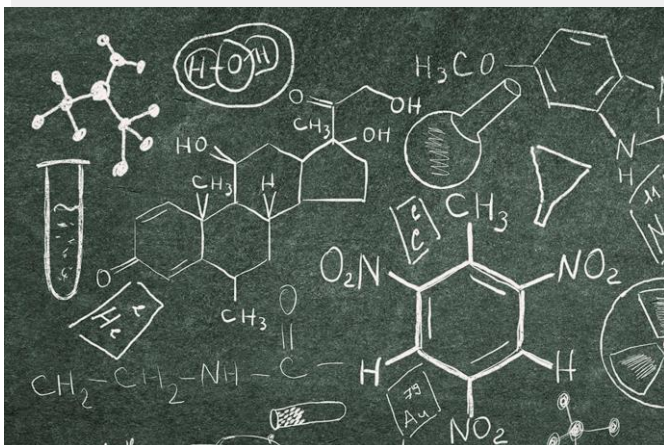
Chimie ParisTech is part of EELISA – European Engineering Learning Innovation and Science Alliance

EELISA

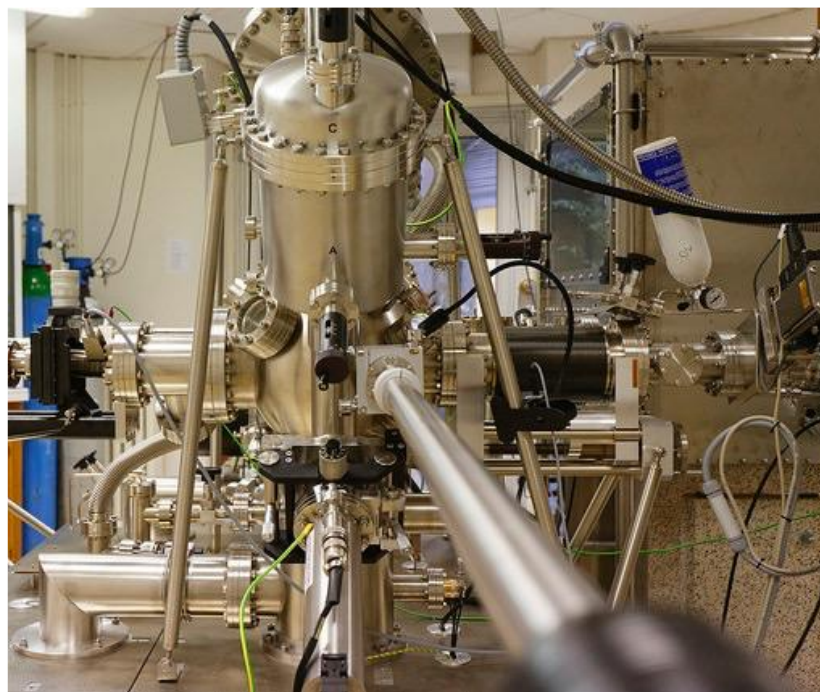




# Training top level professionals in chemistry



# Our Vision



Provide **basics & fundamentals** courses in all fields of chemistry **illustrated by a cutting-edge research**





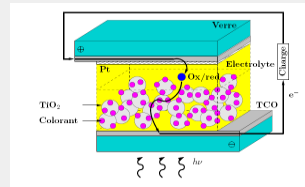
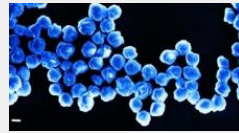
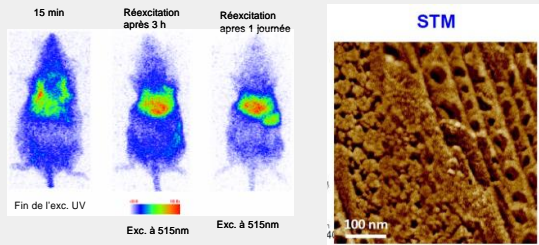


ParisTech

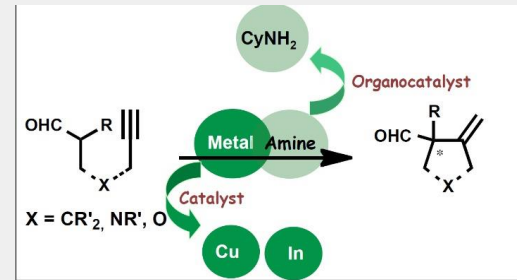


# Fundamental & applied research to tackle societal challenges

## Imaging and characterization (for health, materials and ancient materials...)

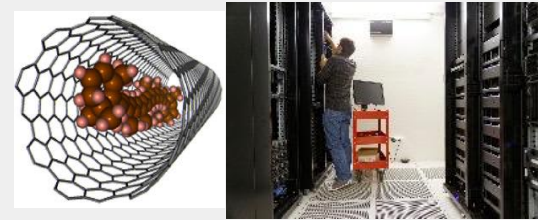


## Nano and smart materials (for optoelectronics, energy and medicine)

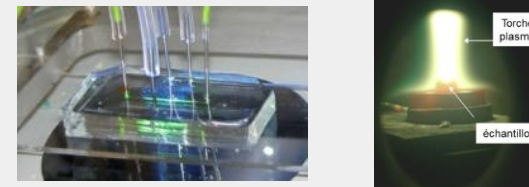


## Catalysis Sustainable processes

## Modeling and simulation



## Chemical Engineering, flow chemistry & microfluidics



TRAINING



Chimie Paris

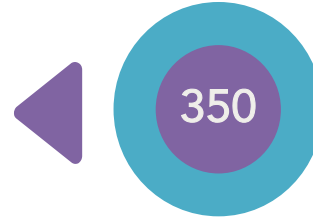
ParisTech





# Training (engineering curriculum)

Highly selected students  
(50% of women)



40%

Practical training



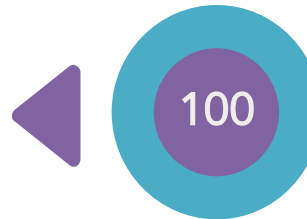
Researchers and  
Professors & Associate  
Professors

20%



Business, management  
and human skills

Admin and  
supporting staff



20%

international  
students



100%

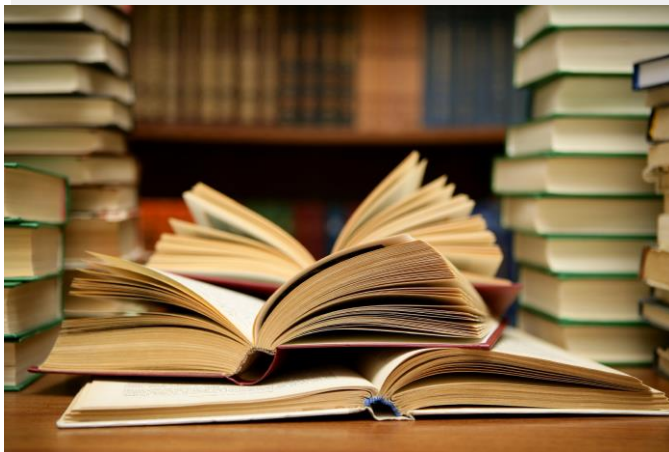
abroad



12 months



Mandatory  
internship



ParisTech





ParisTech



# Training top level professionals in chemistry

**3 years of training**  
**12 months**  
of mandatory internship

Regular meetings with  
**industrials**  
(conferences, workshops, visits)

**Engineering Diploma**  
conferring the grade of  
**Master of Sc in Engineering**

**Year 1**

**Fundamentals towards  
engineering**

Basic courses

**Team projects & Soft skills**

Management, Economy

Language and Cultures

**Worker internship 1-2 months**

**Year 2**

**New applications &  
innovation**

Basic courses & applications

**Projects (innovation)**

**Management, Economy**

Language

**Paid internship - 5 months**

**Year 3**

**Specialization &  
entrepreneurship**

Projects

Engineering

**Innovation/entrepreneurship**

**Paid Master internship - 6 months**

**Year 3: possibility of paid apprenticeship through an agreement  
with a company for 2 semesters**

1<sup>st</sup> year  
in Paris

1 Sept-31 Dec

**Common bases**  
Chemical engineering,  
Metallurgy,  
Polymers, Analytical chemistry II,  
Biochemistry,  
Nuclear energy and radioactivity,  
Thermostatistics and modelization,  
Inorganic chemistry

1 Jan-30 Mar

**Options**  
Molecular chemistry  
Materials  
Chemical engineering  
Analytical and  
Biological Chemistry  
Biotechnologies

**Techno Team project**  
(1/2 day per week)  
teamwork Building of a  
prototype

1 Apr-30 Aug

**Paid  
Internship\***  
(4-5 months)

\*to do in France

**2<sup>nd</sup> year  
in Paris**

**1 Sept - 31 Jan**

## **Engineering**

**Biotechnologies**  
**Sustainable processes &  
materials**  
**Industrial processing**  
**Green organic chemistry**  
**Cosmetology and Formulation**  
**Energies**



**1 Feb - 31 Jul**

**Paid internship\***  
**(6 months)**

**\*if done in France**

# Third year: specialization industrial innovation and/or research

**S5**

Semester 5

Choice of 4 UE among this table, each UE is 145h

**2<sup>nd</sup> year  
in Paris**

Biotechnologies	Physical chemistry for formulation and cosmetology	Processes and Sustainable Materials	Industrial Processes	Energy	Green Chemistry and Ecodesign	Management, Innovation and Consulting	Industry 4.0
Applied microbiology and industrial bioprocesses	Physicochemistry and formulation	Selection and design of materials for the sustainable city	Introduction to Equipment Technology	A world without CO2?	Valorization of bioresources	Innovation and Entrepreneurship	Data Science
Drugs : from design to patient	Cosmetology for engineers	Materials of the Cultural Heritage and durability	Process Control and Scaling	Nuclear Energy	From ecodesign to recycling	Consulting and Strategic Analysis	Machine learning
Biotechnologies and biological drugs		Materials and Environment	Risk management and process simulation				

**Common Core Engineering Culture (6 ECTS)**

- Management & Leadership seminar
- Management and economics
- Entrepreneurship, professional project
- Scientific and business English
- PSL Week

**Possibility of paid apprenticeship through an agreement with a company for 2 semesters**

**S6**

**6 months paid internship**



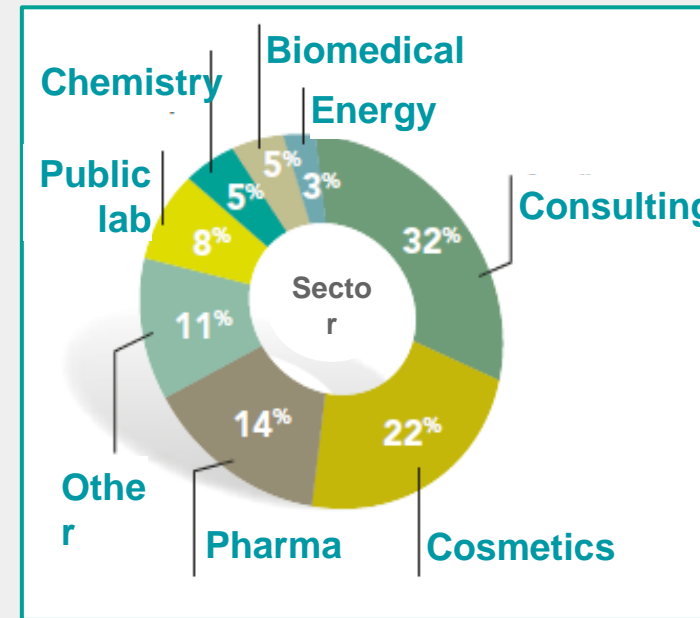
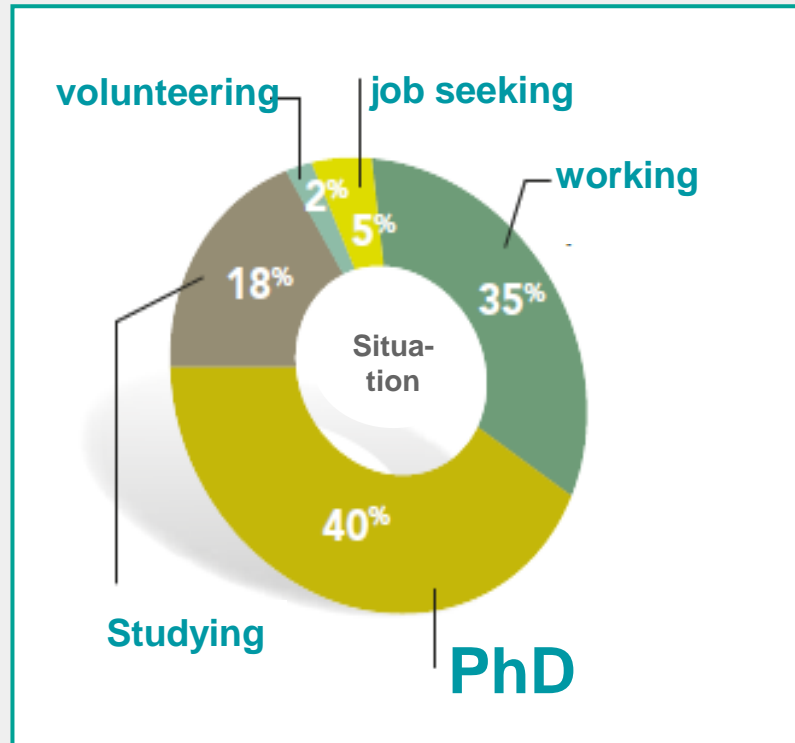
# International students & Conditions to be graduated : 120 ECTS

- 60 ECTS : scientific courses
  - 18 ECTS : management, english and interdisciplinary weeks
  - 12 ECTS : internship (4-5 months)\* **in France**
  - 30 ECTS : end-of-study project (internship 6 months)\*
  - English level : minimum TOEIC score of 800 (B2)
- \* one of these two internships should be done in entreprise



# Chimie ParisTech engineer is the engineer that everyone wants in his team!

+ 90 % of the engineer students get a job or PhD before the graduation ceremony





Shape the  
Chemistry of  
tomorrow  
&  
get the best  
experience of  
Paris



## International students services



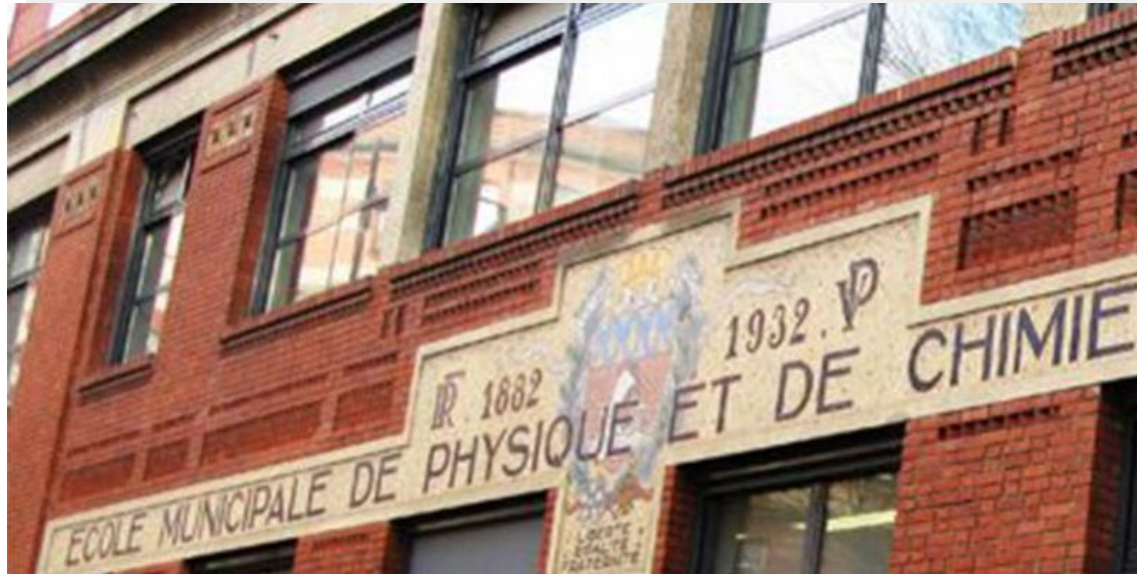
Chimie Paris International








- Registration fees:
  - ZERO € for students from our DD partners
  - 1785 € per year for scholarships recipients from their home country
  - 3570 € per year for individual applicants
- Accommodation
  - Provided for international students in double degree
  - Affordable rents: ~ €340 pm
  - Possibility of accommodation allowance
  - Average living costs in Paris: €800 pm
- PSL Welcome Desk (visa...) & Student association
- Intensive Language Training Programs
- Mentoring by senior students
- Active participation in student activities

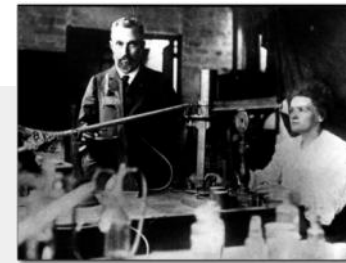


ESPCI





- 
**6**  
 NOBEL PRIZES
- 
**≈ 500**  
 SCIENTIFIC PUBLICATIONS EACH YEAR, OR MORE THAN ONE PER DAY
- 
**85**  
 STUDENT-ENGINEERS PER GRADUATING CLASS
- 
**11**  
 JOINT RESEARCH LABORATORIES
- 
**522**  
 RESEARCHERS, PROFESSOR-RESEARCHERS, POSTDOCTORAL AND PHD STUDENTS
- 
**3**  
 START-UPS CREATED ANNUALLY
- 
**70%**  
 OF STUDENT -ENGINEERS CONTINUE WITH A PHD



**Pierre Curie**  
(Associate Prof.)     **Marie Curie**  
(Researcher)  
**Physics Nobel Prize**  
(1903 - discovery of radium)



**Marie Curie**  
(Researcher)  
**Chemistry Nobel Prize**  
(1911 - isolation of pure radium)



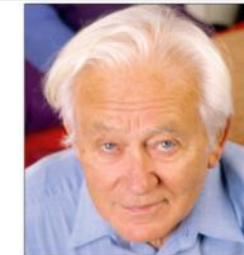
**Frédéric Joliot-Curie**  
(ESPCI graduate)  
**Chemistry Nobel Prize**  
(1935 - artificial radioactivity)



**Pierre-Gilles de Gennes**  
(Director 1976 to 2002)  
**Physics Nobel Prize**  
(1991 - polymers, liquid crystals, soft matter)



**Paul Langevin**  
(ESPCI graduate, Director 1925 to 1946)  
**Professor at Collège de France**  
(sonar, theory of magnetism, etc.)



**Georges Charpak**  
(Distinguished Prof.)  
**Physics Nobel Prize**  
(1992- particle detection chambers)

## Multidisciplinary Engineering Training through Physics, Chemistry & Biology



## Mentoring

80 ESPCI Teachers and Professors  
100+ Classes by scientists  
< 300 students in total

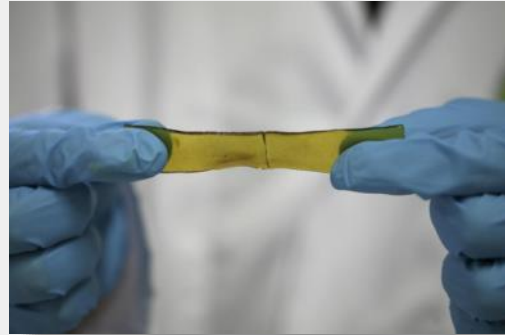
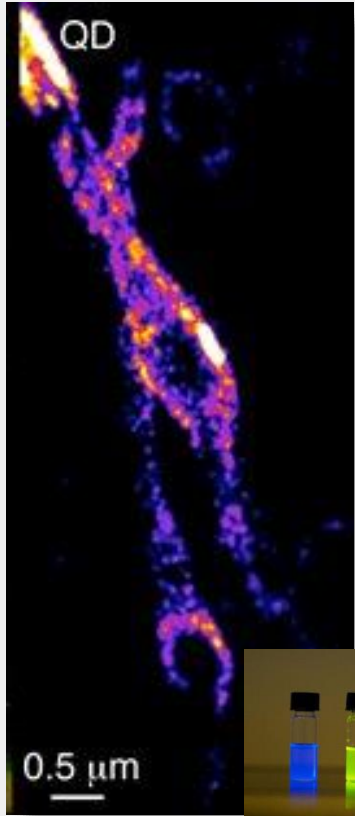
## Classes

Lectures: 90 students  
Problem solving: 30 students  
Advanced topics: < 10 students

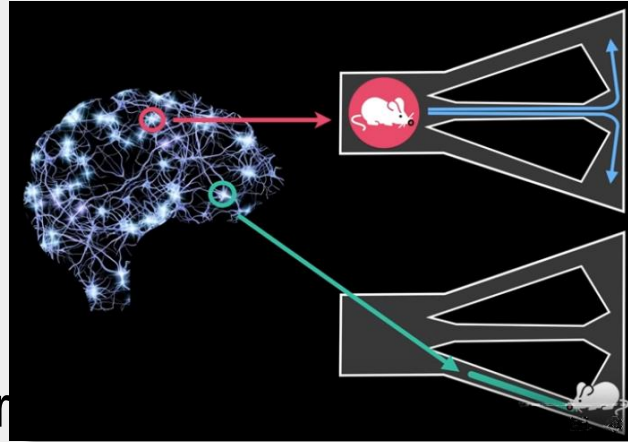
- 3 start-ups per year
- Multidisciplinary approach
- Incubator within ESPCI

 EOS imaging \$51M IPO 2012	 timereversal COMMUNICATIONS Sold 2011	 echosens Sold \$30M 2011	 sensitive Object Sold \$62M 2010	 inventel wireless magic Sold \$130M 2005
 SUPERSONIC imagine The Theragnostic Company™ \$37M raised April 2013 (\$130M total)	 RainDance™ Technologies \$20M raised April 2013	 CYTOO™ \$10M raised November 2011	 Withings \$30M raised July 2013	 LLTECH LIGHT FOR LIFE TECHNOLOGIES \$4M raised 2011
 capsu m science designed for cosmetics \$2M raised (2011) \$5M revenue 35 employees 27 patents	 sculpteo \$3M raised (2012) \$2M revenue 20 employees	 invoxia \$2M raised (2012) \$1M revenue 20 employees	 VisionObjects \$10M revenue 20M users	

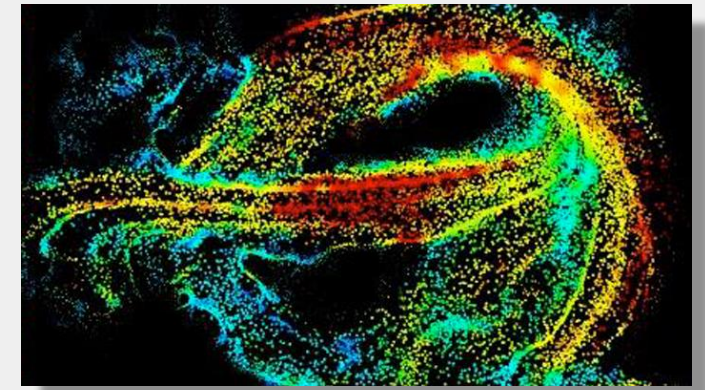




Self healing polymer



Neurofeedback



Ultrafast, ultra-high-resolution ultrasound imaging (brain vascularity)



Image reconstruction  
*Cannabis* effect on neurons



300 m of road equipped with a neutral coloured magnetic tape

Smart cars

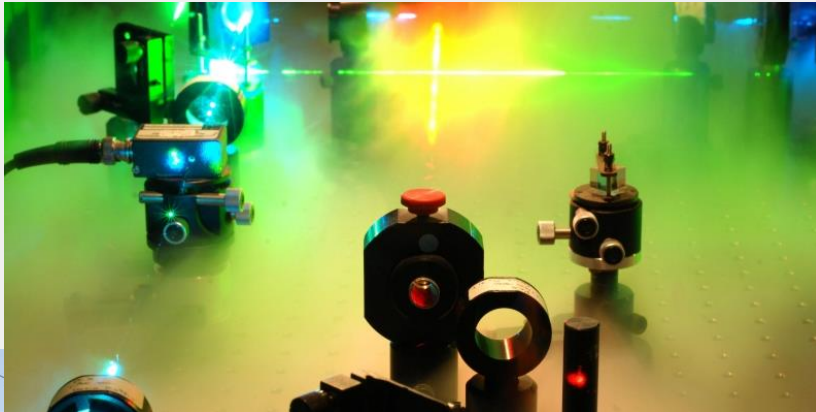


Gravitational wave detection (VIRGO)

**IOGS**



*A LUMINE MOTUS – INSPIRED BY LIGHT, SINCE 1917*



*Physics of light and its interaction with matter*

*Widest offer of course in our field*

- ✓ Ray optics and aberrations, optical system design
- ✓ Advanced wave optics
- ✓ Instrumentation, Photometry, Detection
- ✓ Imaging, image processing and AR/VR
- ✓ Lasers and electro-optics, non-linear optics, optical fibers, optical telecommunications
- ✓ Biophotonics, Nanophotonics
- ✓ Quantum optics, atom optics
- ✓ Space optics, X-UV optics
- ✓ Solar energy
- ✓ Mathematics, electronics and computer science for signal and image processing
- ✓ *Track in innovation and entrepreneurship*



PARIS-SACLAY CAMPUS



BORDEAUX CAMPUS



SAINT-ÉTIENNE CAMPUS

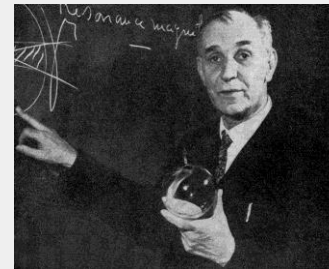


## A LEADING INSTITUTION IN OPTICS & PHOTONICS

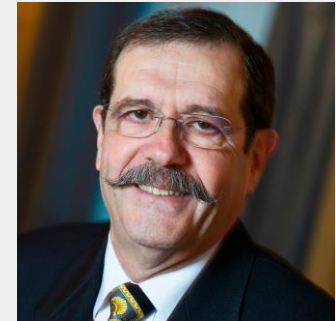
- 2017: celebrated 100 years of research and education in optics and photonics
- 3 campuses: **Paris-Saclay**, Bordeaux, Saint-Etienne
- A rich history since 1917



**Charles FABRY**  
*1st Director  
General  
(1917-1945)*



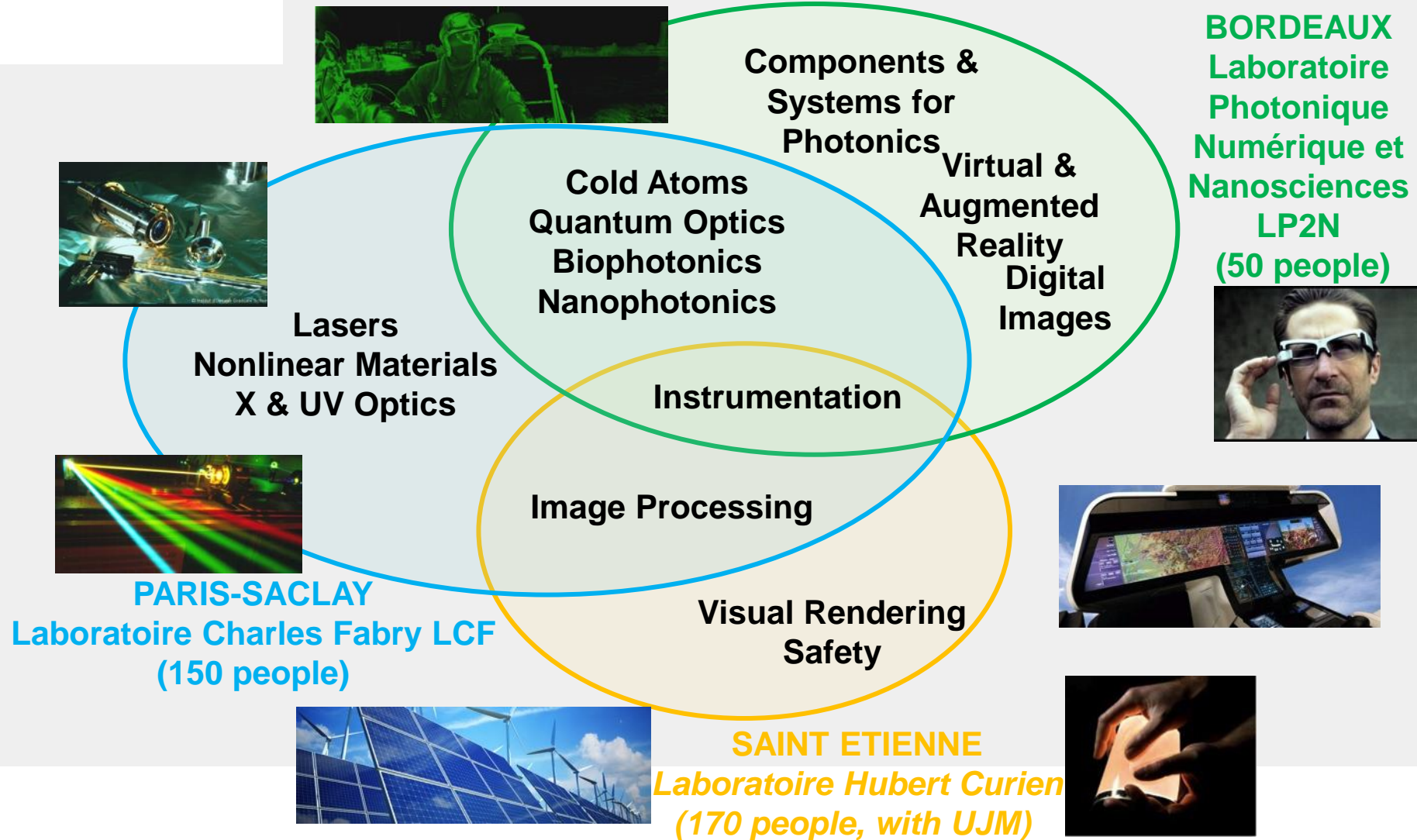
**Alfred  
KASTLER**  
*President of the  
Board (1960s)*



**Alain ASPECT**  
*Augustin Fresnel  
Chair Professor &  
Scientific Advisor,  
Nobel Prize in  
Physics 2022*



RESEARCH ACTIVITIES – 3 RESEARCH CENTERS



## COURSE CURRICULUM OF THE MScENG PROGRAM (DIPLOME D'INGENIEUR)

- 3 campuses:
  - PS= Paris-Saclay
  - Bdx= Bordeaux
  - StE= Saint Etienne
- 35% of MScEng graduates continue towards PhD
- Top employment industries:
  - Optics, electronics and IT sectors
  - Engineering and IT consulting firms
  - Transportation and mobility sectors
  - Defense and security industry

1 <sup>st</sup> year = Bachelor final (PS)	2 <sup>nd</sup> year = Master 1st (PS or Bdx or StE)	3 <sup>rd</sup> year = Master 2nd (PS or Bdx or StE)
General inter-disciplinary education	General inter-disciplinary education	General inter-disciplinary education
General scientific education	General scientific education	Wide range of openings and specialisations
Photonics related courses	<i>Paris Saclay</i> : Light-Matter Interactions, Signal and Image Sciences, Nanosciences, Extreme (X and UV) Optics	
	<i>Bordeaux</i> : Photonics and Digital Sciences, Virtual Reality, Cognitive Sciences, Physics and Modelling	
	<i>St Etienne</i> : Photonics for Imaging, Lighting, Energy	
(1 month internship)	3 month internship	4-6 month internship

**Mines**



## Facts and figures

### Our identity

- Founded in 1783 and evolving strongly over the centuries
- Reports to the Ministry of Industry and Finance
- Part of *Paris Sciences et Lettres* Research University
- Founding member of ParisTech



### Rankings

**l'Étudiant**

2021  
1th  
Academic  
excellence

**L'USINE  
NOUVELLE**

**THE WORLD  
UNIVERSITY  
RANKINGS**

2021  
Worldwide  
46th

**QS WORLD  
UNIVERSITY  
RANKINGS**

2021  
National  
3th

2021  
Worldwide  
53th

### Figures

- 1,023 permanent staff including 232 research academics
- 1,409 graduate students
- 392 PhD students

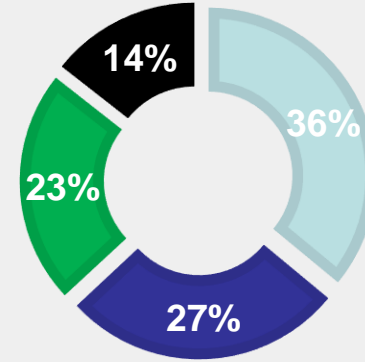
# Overview

**1/3**  
international  
teachers

**120**  
partners  
universities

**35 %**  
international  
students

## Programs



- Master in Science and Executive Engineering (Diplôme d'ingénieur)
- International Masters
- PhD
- Advanced Masters programs



## Innovation and entrepreneurship

- Department Management, Society, Economy
- Specialisation « Innovation and entrepreneurship »
- Chair « Theory and Methods of Innovative Conception »
- Interdisciplinary Institute of Innovation (i3)

**7 M**  
In software  
commercialization  
activity

**74**  
Patents

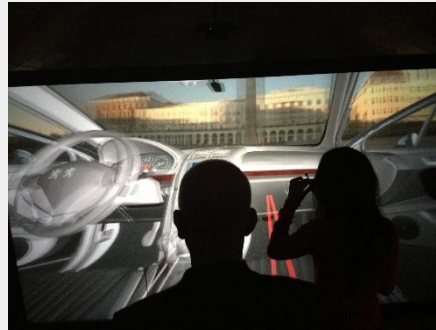
**20**  
Companies  
created



## Our research environment

1<sup>st</sup>

University in France  
for the amount of  
contractual  
research



2 Nobel prizes

Maurice ALLAIS -  
Economics - 1988  
Georges CHARPAK –  
Physics - 1992



## 5 departments, 18 researchs labs

- Energy and process engineering
- Earth sciences and environment
- Mathematics and complex systems
- Materials and mechanics
- Economy, management and society

## Research oriented to the economic world

- Top research at the intersection of multiple fields
- Very broadly invested key research areas (energies of the future, new materials) but also some niche research areas (health and environment, innovation and competitiveness)
- Emergence of new disciplines (geostatistics, mathematical morphology, control of flat systems)

30  
industrial  
chairs

200  
industrial  
partners

1000  
/year  
Research  
contracts  
30 M

400  
scientific  
publications  
rank A

# Our learning environment

Strong background in fundamental courses,

*Mathematics, physics, mechanics ...*

with a multidisciplinary approach:

*Social sciences, Languages, Sports, Economy and management, Innovation and entrepreneurship*

and the possibility to customize your curriculum with 16 fields of specialization

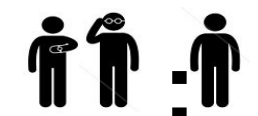


Health	Energy and Environment	Mathematics and Digital Sciences	Materials Sciences	Social and Economic Sciences
<ul style="list-style-type: none"> <li>•Biotechnology</li> </ul>	<ul style="list-style-type: none"> <li>•Soils and subsoils</li> <li>•Geosciences</li> <li>•Processes and Energy</li> <li>•Machines and Energy</li> </ul>	<ul style="list-style-type: none"> <li>•MAREVA (Applied Mathematics, Robotics, Vision and Automation)</li> <li>•Geostatistics and Applied Probability</li> <li>•Digital Engineering of Complex Systems</li> <li>•Information Systems Management</li> </ul>	<ul style="list-style-type: none"> <li>•Atomic engineering</li> <li>•Sciences and Material Sciences</li> </ul>	<ul style="list-style-type: none"> <li>•Public Affairs and Innovation,</li> <li>•Industrial Economics,</li> <li>•Scientific Management,</li> <li>•Conception Engineering</li> <li>•Production and Logistic Systems</li> </ul>

51 k average salary (first position)

60% students employed before graduation

prepared to become managers, in any kind of companies, all over the world.



## Our living environment



Located in the heart of Paris 



- A residence 5 minutes walk from school, affordable rent around 340 €/month
- A rich student and cultural life
- Accessibility to many services and facilities (restaurant, library, sports facilities)
- Administrative services at your disposal through the PSL Welcome Desk (health care, visa, scholarships) and buddy system for internationals
- Living costs covered generally by scholarship from the Foundation of Mines Paris of 700€/study month (or other scholarships like Eiffel) and paid internships

**Intensive French summer course**

**85% students with scholarships**

**40 students associations**

**15 sports offered**

For more information, please contact: [international@minesparis.psl.eu](mailto:international@minesparis.psl.eu)

**informações práticas**





# Nosso Recrutamento

- inscrições abertas a partir do dia **1o de junho de 2024** : portal "**STUDY WITH US**" !!!
  - <https://studywithus.paristech.fr/fr/le-diplome-dingenieur/paristech-international-admission-program/brazil-admission-programme>
  - todo o processo está inteiramente explicado em português
  - inclui exemplos de questões do teste que será aplicado online dia **27 de setembro**
  - inclui informações sobre taxas escolares
- webinar internacional dia **11 de junho de 2024 ! inscrições em andamento !!!**
- **PRINCIPAL OBJETIVO DA ENTREVISTA DE MOTIVACAO:**
  - **avaliar a maturidade do candidato** com vistas à mobilidade
- **PRINCIPAL OBJETIVO DO TESTE ACADEMICO :**
  - **avaliar a coerência** entre o curso seguido na universidade de origem e o projeto de mobilidade para uma ou mais escolas de nosso grupo



## ➤ POSSIBILIDADES DE FINANCIAMENTO:

### A. bolsas Eiffel (Campus France, governo francês) !

- Muita concorrência, mesmo entre excelentes estudantes (primeiro da turma, etc);
- Valor mensal de ~1300 euros (bolsa + auxílio moradia), e passagem aérea

### B. bolsas CAPES / BRAFAGRI ou BRAFITEC (governo brasileiro) :

- Programa re-iniciado em finais de 2022 !!!
- Valor mensal de ~1300 euros (bolsa + auxílio moradia), e passagem aérea

### C. auxílio des « Fondations » :

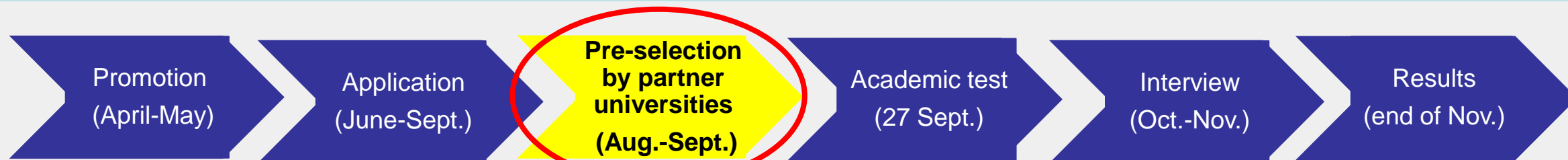
- Concorrência, para estudantes sem bolsa de estudos

### D. alternância (« apprentissage », « apprenticeship ») :

- Seleção interna à escola, identificação da empresa, etc;
- Salário durante os estudos na França

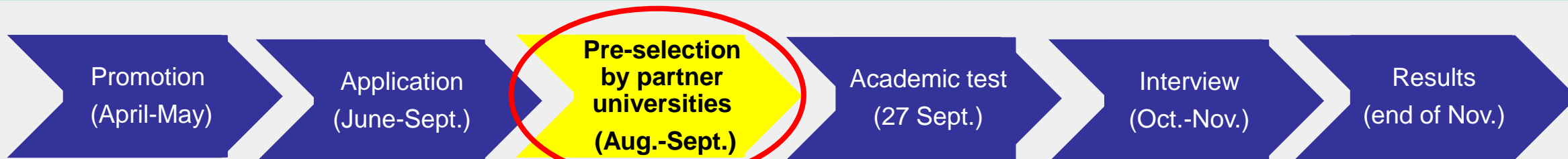
### E. bolsas industriais

# International Admission Process



	Argentina	Brazil	Colombia	China	Asia (except China)	Other countries
Opening of on-line application	June 1, 2024					
Pre-selection by universities (Argentina, Brazil, Colombia)	September 13, 2024					
Application deadline	September 19, 2024					
Mock test	September 26, 2024					
On-line academic test	<b>September 27, 2024</b>					
Interview period	October 10-11, 2024	October 14-18, 2024	October 7-9, 2024	October 14-18, 2024	October 7-8, 2024	October 9-11, 2024
Scientific interview (if requested)	End October – Beginning of November					
ParisTech Admission Board / Publication of the results	November 22, 2024					

# International Admission Process



	Argentina	Brazil	Colombia	China	Asia (except China)	Other countries
Opening of on-line application	14 de outubro: Sao Paulo (USP)					
Pre-selection by universities (Argentina, Brazil, Colombia)	September 13, 2024					
Application deadline	15 de outubro: Sao Carlos (UFSCAR)					
Mock test	September 26, 2024					
On-line academic test	16 de outubro: Campinas (UNICAMP)					
Interview period	October 10-11, 2024	October 14-18, 2024	October 7-9, 2024	October 14-18, 2024	October 7-8, 2024	October 9-11, 2024
Scientific interview (if requested)	17 de outubro: Bauru (UNESP), Belo Horizonte (UFMG), Porto Alegre (UFRGS)					
ParisTech Admission Board / Publication of the results	End October – Beginning of November November 22, 2024					
	18 de outubro: Rio de Janeiro (UFRJ, PUC-Rio)					

# Tuition fees

ParisTech Schools	Double degrees	Individual applicants
AgroParisTech	Argentina, Brazil, Colombia (public partner universities): 0€ China (partner universities): 1831€ in the 2 <sup>nd</sup> year and 4449€ in the 3 <sup>rd</sup> year	4449€/year – fees may be adjusted on a case-by-case basis up to a full exemption
Arts et Métiers	Waived if paid at home institution	601€/year
Chimie ParisTech - PSL	All countries: 0€	3570 € per year (1785 € per year for scholarships recipients from their home country)
ESPCI Paris - PSL	Waived if paid at home institution + 150 € students association	No agreement: 850€ = 700 € + 150 € (students association) per year
Institut d'Optique Graduate School	2900 € per year (the regular rate for non-European students is 5000 € per year) Brazil, Colombia: can be reduced to minimum rate of 665 € if a specific DD agreement is signed	2900 € per year for students from partner universities (the regular rate for non-European students is 5000 € per year)
Mines Paris - PSL	Depending on each agreement. AR, BR, COL, CN: Fee waiver for the 1st and 2nd year of studies in France	4150 € per year for European, 6350 € per year for non European students

*\*Index 2023-2024. Tuition fees and others are subject to annual review*

# Contact / ParisTech school

Juri de admissão:  
[brazil-admission@paristech.fr](mailto:brazil-admission@paristech.fr)

AgroParisTech: [incomers@agroparistech.fr](mailto:incomers@agroparistech.fr)

Arts et Métiers: [admissions@ensam.eu](mailto:admissions@ensam.eu)

Chimie ParisTech - PSL:  
[international@chimieparistech.psl.eu](mailto:international@chimieparistech.psl.eu)

ESPCI Paris - PSL: [international@espci.fr](mailto:international@espci.fr)

Institut d'Optique:  
[international@institutoptique.fr](mailto:international@institutoptique.fr)

Mines Paris - PSL:  
[international@minesparis.psl.eu](mailto:international@minesparis.psl.eu)



(questões ?)

