



EEIGM

ÉCOLE EUROPÉENNE D'INGÉNIEURS
EN GÉNIE DES MATÉRIAUX



**UNIVERSITÉ
DE LORRAINE**

EEIGM

EUROPEAN SCHOOL
OF **MATERIALS** SCIENCE
AND ENGINEERING

ULB



**UNIVERSITÄT
DES
SAARLANDES**



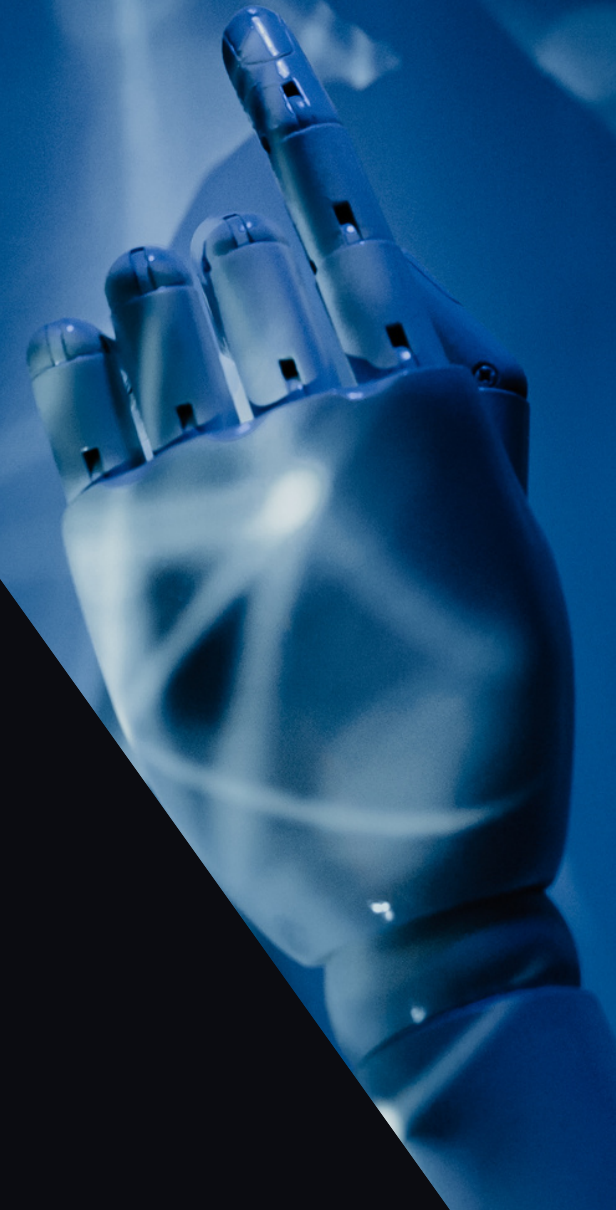
LULEÅ
UNIVERSITY
OF TECHNOLOGY



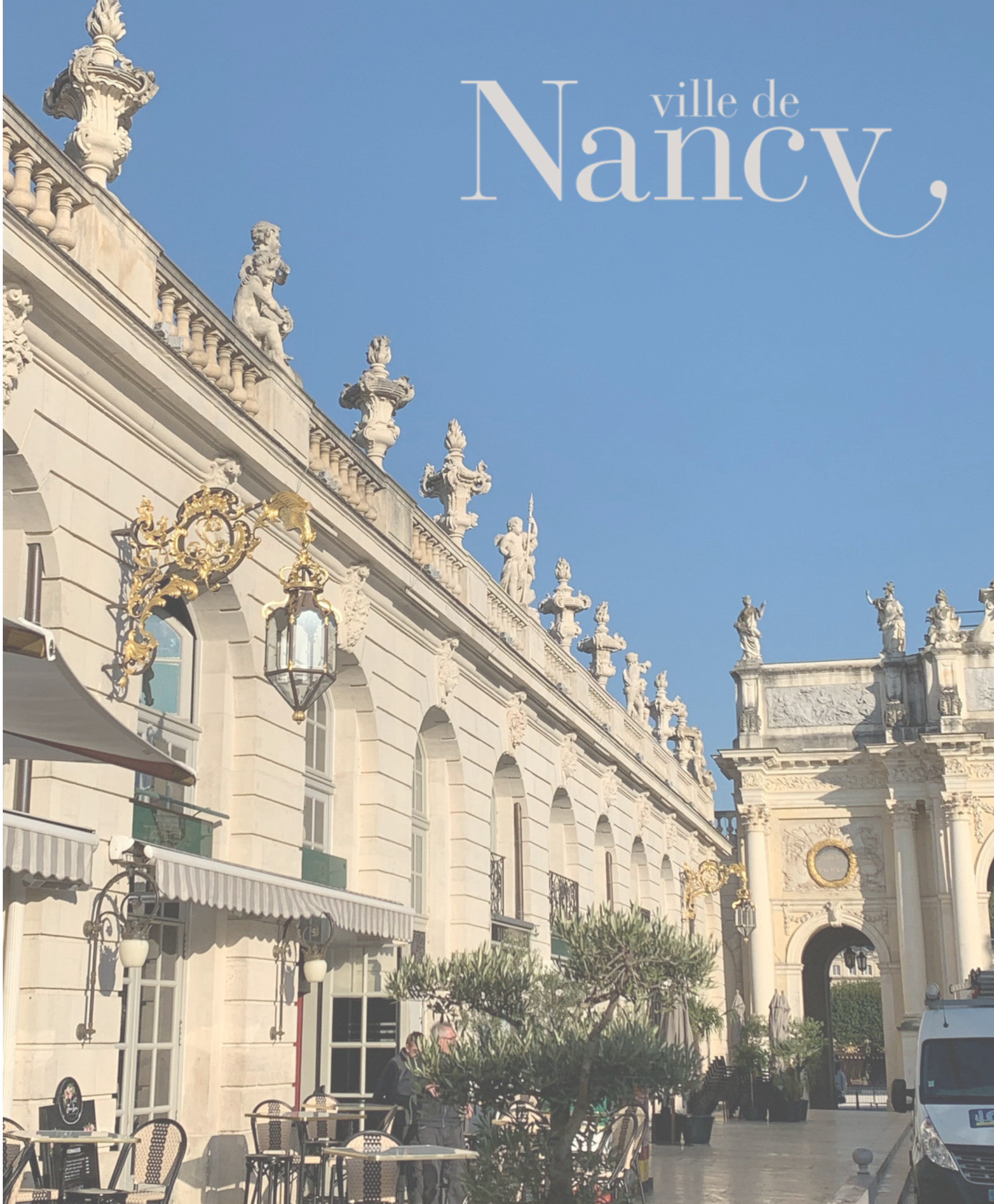
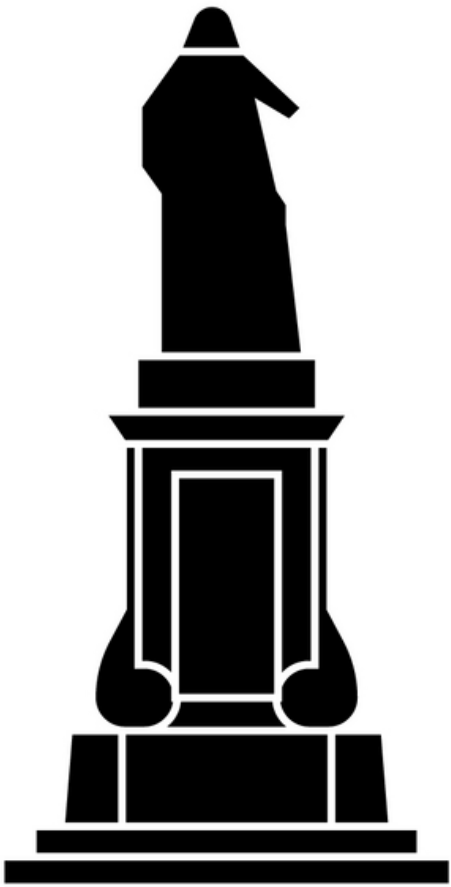
**UNIVERSITAT POLITÈCNICA
DE CATALUNYA
BARCELONATECH**



**UNIVERSITAT
POLITÈCNICA
DE VALÈNCIA**

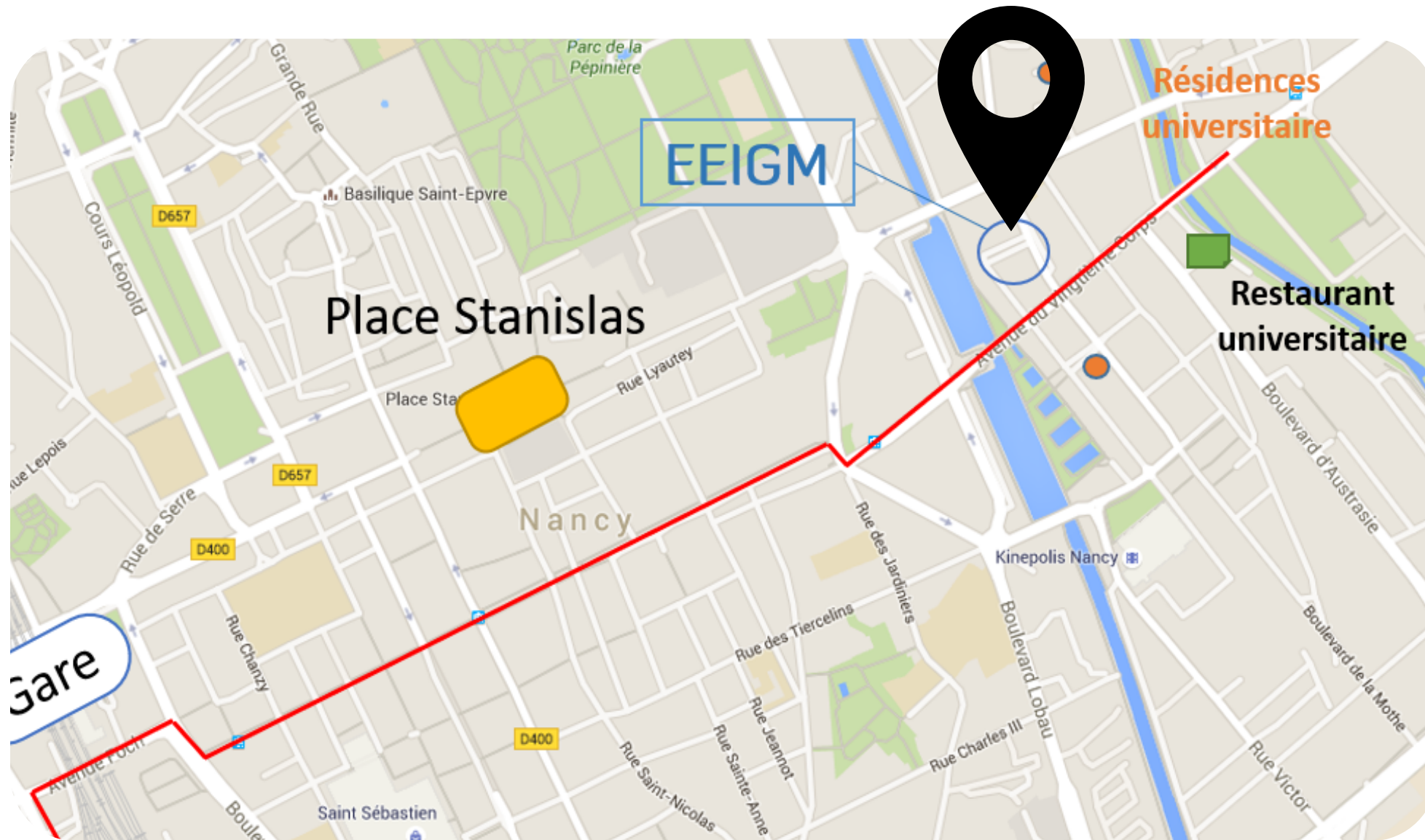


GEOGRAPHICAL SITUATION



ville de
Nancy,

A SCHOOL IN THE HEART OF NANCY



➔ **15 minutes** away from the **train station**

➔ **Close** to **many supermarkets** and **restaurants**

CAPITAL OF " ART NOUVEAU "



SIGHTSEE OUTSIDE THE CITY



UNIVERSITY OF LORRAINE

The University of Lorraine has **11 Engineering schools** in total.
Each one has its **specialty**.

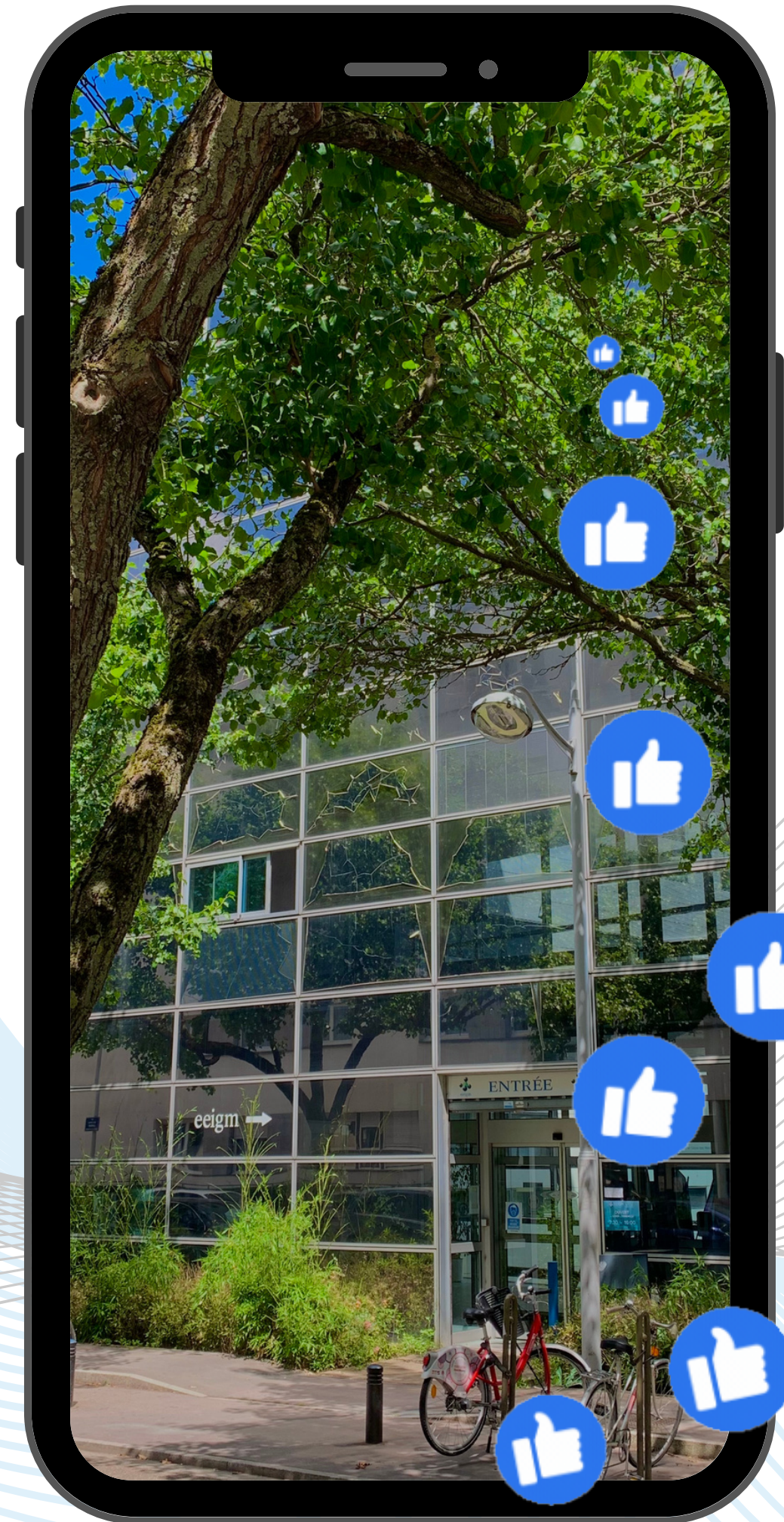
Many campuses in **several cities** in the region of **Lorraine**.
EEIGM : Campus Lepage.

Over **10 000 international students**
(**16%** of *Bachelor and Master students combined* and **46%** of *PhD students*)



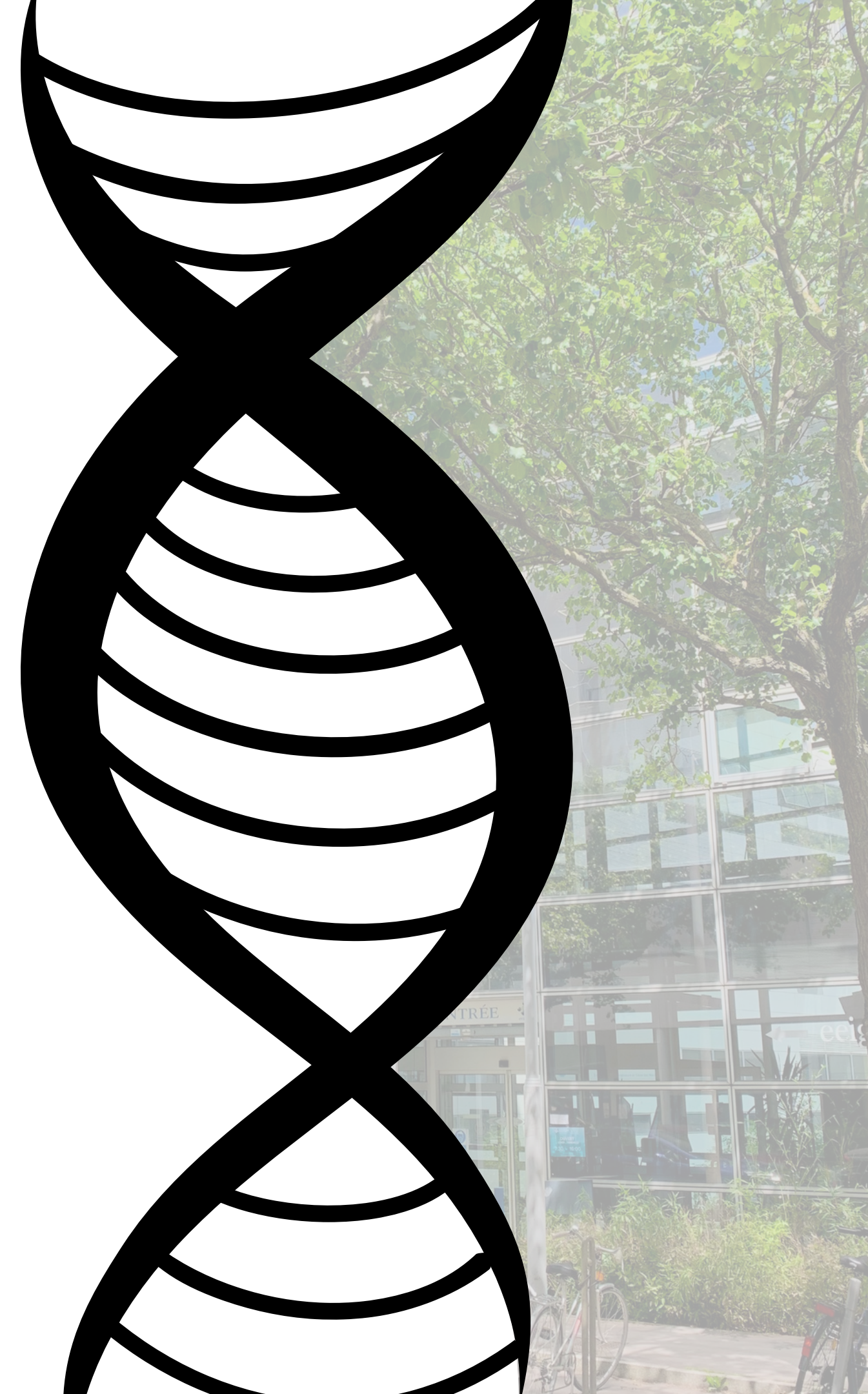
EEIGM'S ID CARD

- ✓ **Public engineering school (program in 5 years)**
part of the University of Lorraine
- ✓ **25% to 30% of international students and 40% of female students**
- ✓ **4 languages taught : French, English, German and Spanish**
- ✓ **Double and triple degrees**



SOME NUMBERS

- ✔ Students find their **first job 18 days** after getting their diploma
- ✔ **50% of students** are hired **before the end of their studies**
- ✔ **50%** of our graduates **start their career abroad**



A PUBLIC SCHOOL AT HUMAN SCALE

Around **90 students** in each year

Professors are **always available** to **help** students

Classes in **small groups (18 students max)**



THE EEIGM IS PART OF AN EUROPEAN CONSORTIUM OF 7 UNIVERSITIES



AN EUROPEAN SCHOOL OPEN TO THE WORLD

MINIMUM OF 1 YEAR ABROAD FOR ALL STUDENTS

CLASSIC PATH

SANDWICH STUDENTS PATH

Minimum of 1 year abroad

30% of international students

2 language certificates of B2 level

Semester 10

Industrial Internship



Semester 10

Industrial Internship abroad
Study quarter in Lulea
Company



Semester 9

Research internship



Semester 9

Company



Semester 8



Semester 8

Research internship in Lulea,
Saarbrucken or Valencia
Company



Semester 5 to 7

Linguistic internship



Semester 5 to 7

Linguistic internship
Company



Semester 1 to 4

(or 1 to 6)

+ linguistic internship at the end of the 1st year
+ internship in a company



Post Bac

All students from the consortium start at their home universities

Semester 1 to 4

EEIGM or another institution of high education

SAME DEGREE/ SAME RULES : MINIMUM OF 1 YEAR ABROAD, 2 OFFICIAL LANGUAGE CERTIFICATES OF B2 LEVEL (MINIMUM)

LULEA SWEDEN



BRUSSELS BELGIUM

SAARBRUCKEN GERMANY

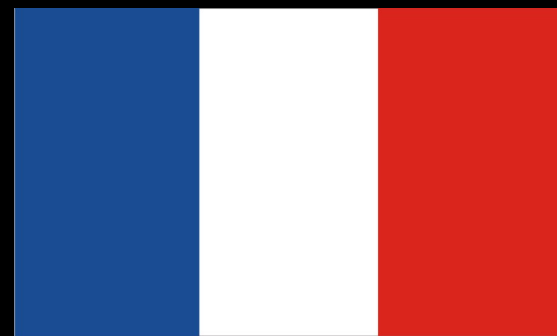
LEOBEN AUSTRIA

NANCY FRANCE

VALENCIA SPAIN

BARCELONA SPAIN

A DIPLOMA SIGNED BY THE **FOUR** FOUNDING MEMBERS OF THE EEIGM **CONSORTIUM**



Université de Lorraine
1991



Universität des Saarlandes
1991



Universitat Politècnica de Catalunya
1991



Lulea Tekniska Universitet
1993

MOBILITY SCHEME FOR USP STUDENTS

Spots per year in the double-degree agreement : 5

Option 1

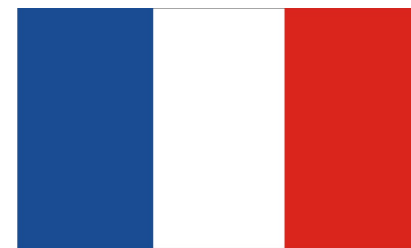
Industrial internship + some classes at USP



1 semester of classes in the EEIGM consortium



3 semesters in Nancy



Semesters 1 to 7 at USP



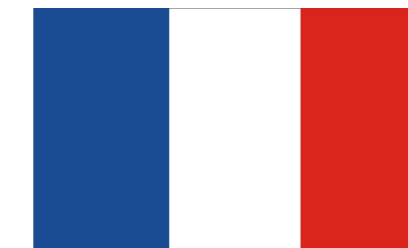
Industrial internship + some classes at USP



Industrial internship supervised by the EEIGM



3 semesters in Nancy



Semesters 1 to 7 at USP

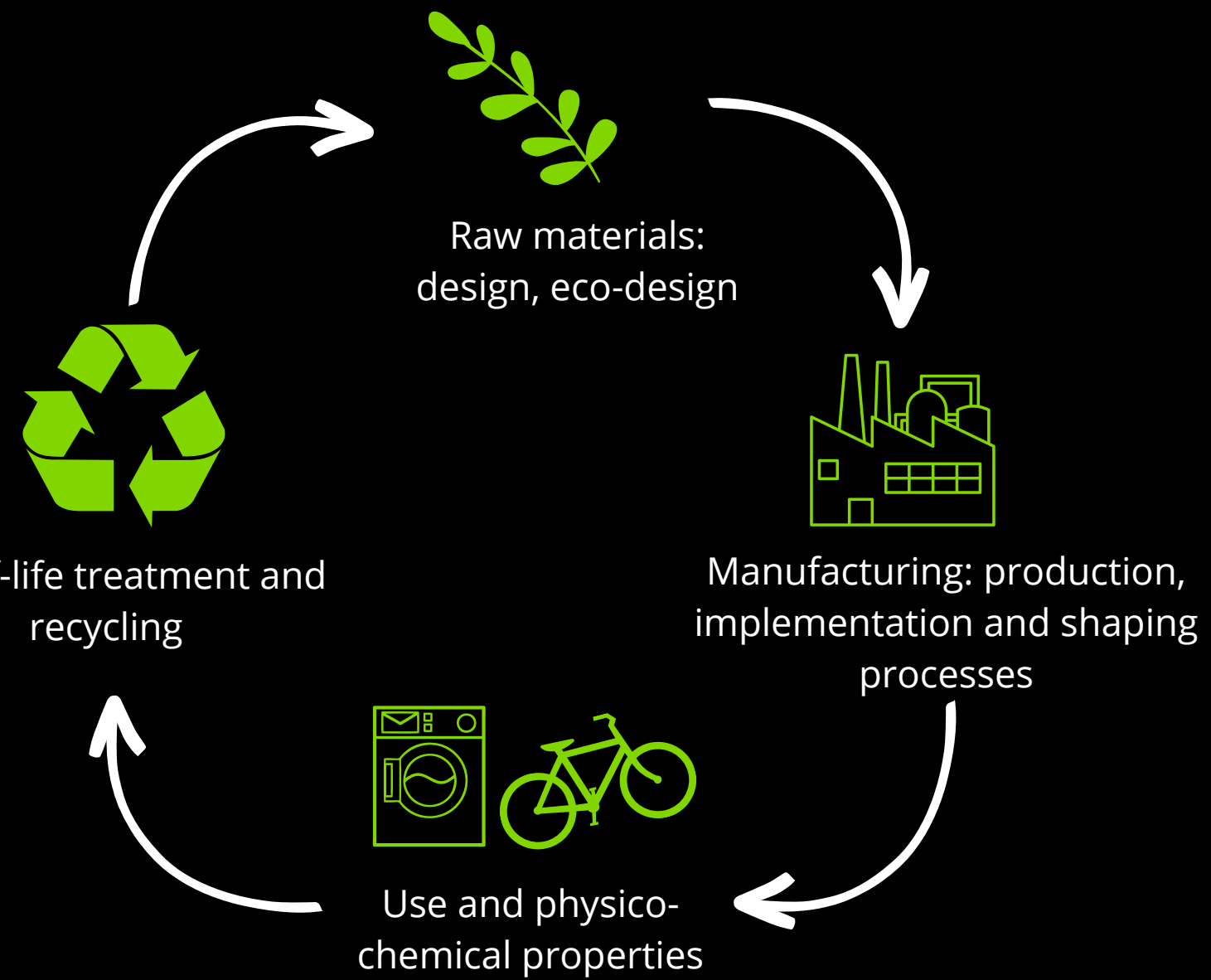
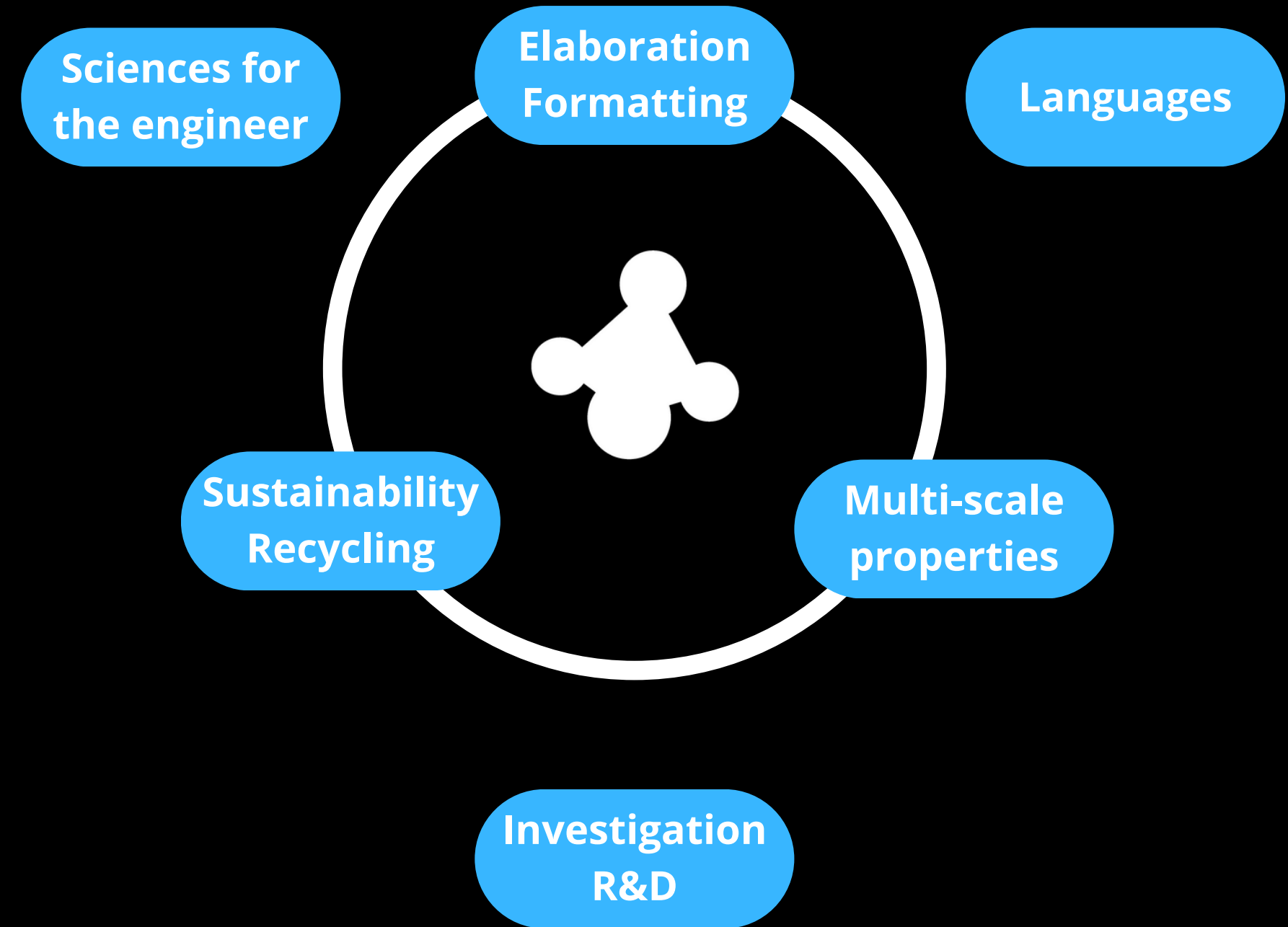
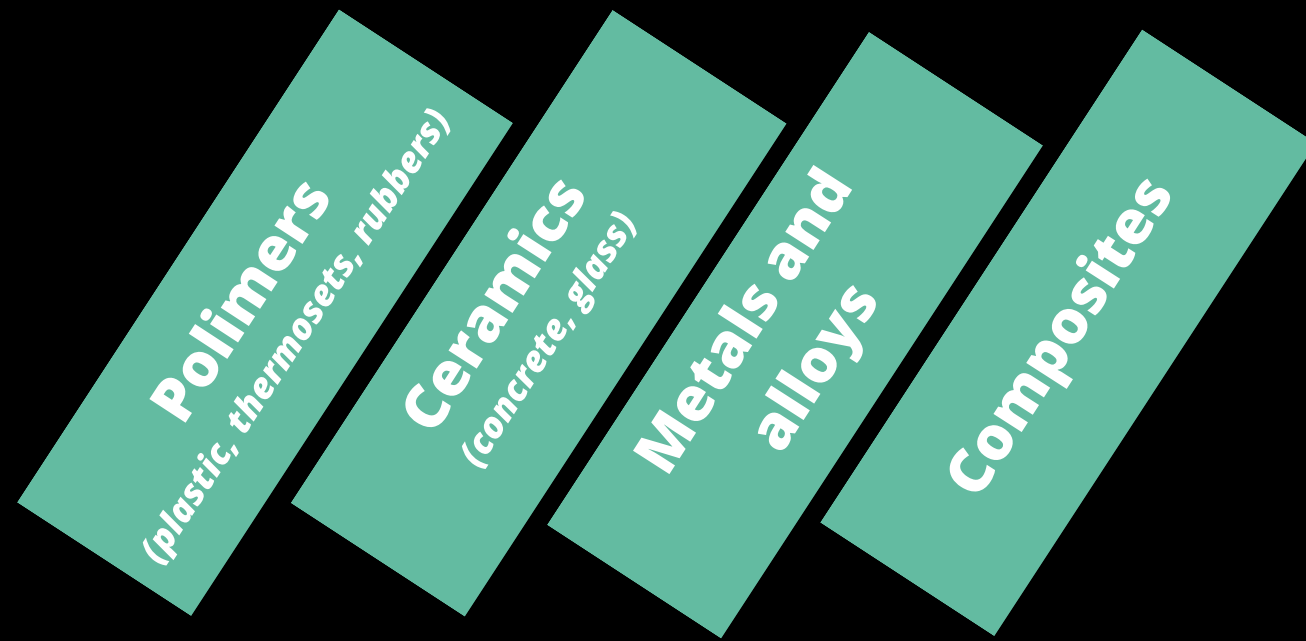


Option 2

Program involved: **Engenharia de Materiais**
Minimum level of French required : **A2**

STUDIES

Become a Materials Science Engineer

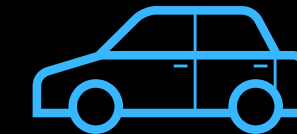


NEW OPTIONS



MATERIALS FOR HEALTH

MATERIALS FOR MOBILITIES



MATERIALS FOR ENERGY

80 hours of lectures

40 hours of project - they will elaborate and characterize materials and make different types of analyzes in groups of 4-5 students

during semesters **6** and **7**



MORE THAN 32 LABS THANKS TO OUR EUROPEAN CONSORTIUM



UNIVERSITÄT
DES
SAARLANDES

Processing, characterisation and properties of nanomaterials and thin films
Advanced manufacturing technologies
Materials simulation and characterisation
Materials for functional devices and systems
Metal glasses, construction metals and functional metals



Functional thin films and surfaces treatments
Properties of nanoparticles
Metallurgy
Advanced metallic materials
Materials and devices for energy
Corrosion Science
Composite materials
Polymer engineering and recycling

ULB

Surface treatments
Metallurgy
Treatment/recycling of industrial wastes
Precipitation of carbonates
Thermal solar



UNIVERSITAT POLITÈCNICA
DE CATALUNYA
BARCELONATECH

Contact damage
Polymers and Polymer matrix composites
Advanced ceramics and coatings
Micro and Nanomechanics



High performance composites and metals
Nano and natural fibre composites
Synthesis of new ceramic and metallic materials
High temperature advanced materials
Additive manufacturing of steels and intermetallics
Nanomaterials for energy
Hierarchical materials



UNIVERSITAT
POLITÈCNICA
DE VALÈNCIA

Welding
Corrosion
Powder metallurgy
Electrodeposition of functional thin layers
Laser Cladding and Thermal spray Coating

MAIN INDUSTRIAL PARTNERS



HOW WE WELCOME INTERNATIONAL STUDENTS

International Students Bureau (BEI)

Special Welcome (international students arrive earlier than French students)

Tour of the neighborhood with international coordinator

Contact with the **ambassadors** before their arrival



CLUBS AND EVENTS



**BDSPORT, BDZIK,
BDVOYAGES, BD
SCALADE, BD FETES,
BDVIN, POMPOMS,
ADELPHE, etc.**

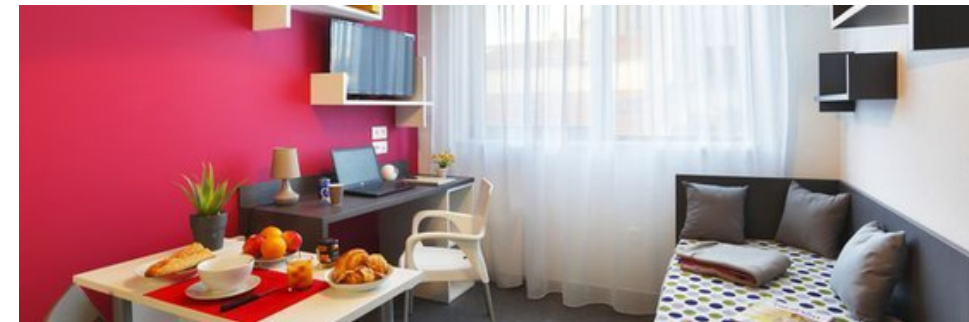
HOUSING

PUBLIC STUDENT RESIDENCES



<https://trouverunlogement.lescrous.fr/>

PRIVATE STUDENT RESIDENCES CLOSE TO THE EEIGM



NÉMÉA NANCY CAMPUS

<https://www.nemea-residence-etudiante.com/france/lorraine/location-meurthe-et-moselle-55.html>



LES ESTUDINES

<https://www.estudines.com/logement-etudiant-nancy/residence-stanislas>

OTHER POSSIBILITIES OF HOUSING

MORE INFORMATION REGARDING
SHARED FLATS AND PRIVATE
APARTMENTS AVAILABLE ON THE
WEBSITE OF THE UNIVERSITY

<https://welcome.univ-lorraine.fr/fr/logement/>

COST OF STUDIES

Application fees	0 € Students pay the fees to their home university
Medical insurance	20-30 € per month Social security is free but subscribing to a private insurance is highly encouraged
Liability and home insurance	30-60 € per year
Housing <ul style="list-style-type: none">• CROUS Residence• Private Flat• Shared Flat	<ul style="list-style-type: none">• Between 190 € and 350 €/ month• Between 350 € and 600 €/ month• Between 300 € and 450 €/ month
Meals at the university cafeteria	3,40€/meal Open during lunch and diner hours
Public transportation in Nancy	28 € per month or 9 € for 10 tickets

GRANTS



<https://www.bresil.campusfrance.org/campus-france-brasil>



CAF : around 100 to 150 euros per month

CONTACTS FOR INTERNATIONAL RELATIONS



David Horwat

Professor and Head of International Partnerships
In charge of collaboration with international partners and double-degree agreements.

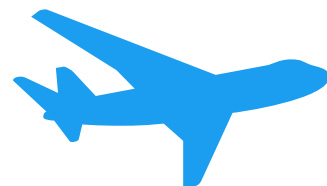
david.horwat@univ-lorraine.fr



Héloïse Patela

International coordinator
Receives nominations.
Sends admission letter and information regarding housing. Main contact for international students.

heloise.patela@univ-lorraine.fr



International Relations Department of the University : Online application documents (transcript, ID Card and learning agreement), help the students with some administrative problems (bank, CAF, social security, etc.).