

ENTER A DOUBLE DEGREE PROGRAM WITH A FRENCH PARTNER SCHOOL

Earn a Graduate Engineer Degree
from a French top-ranked School of
Engineering and Applied Sciences





Double-degree programs of the Institut Polytechnique de Paris

ENSAE Paris

ENSTA Paris

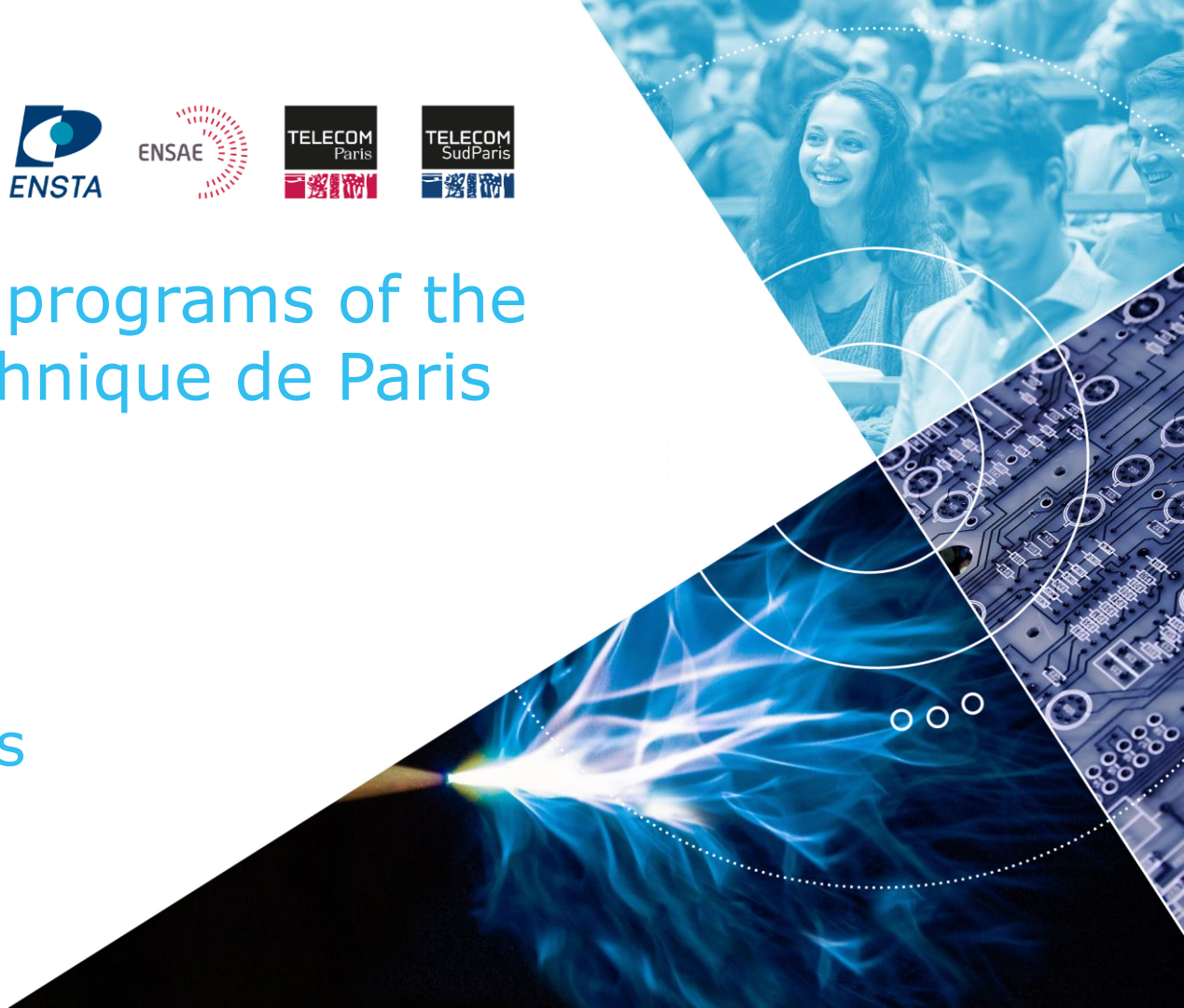
Telecom Paris

Telecom SudParis

International admissions



ip-paris.fr



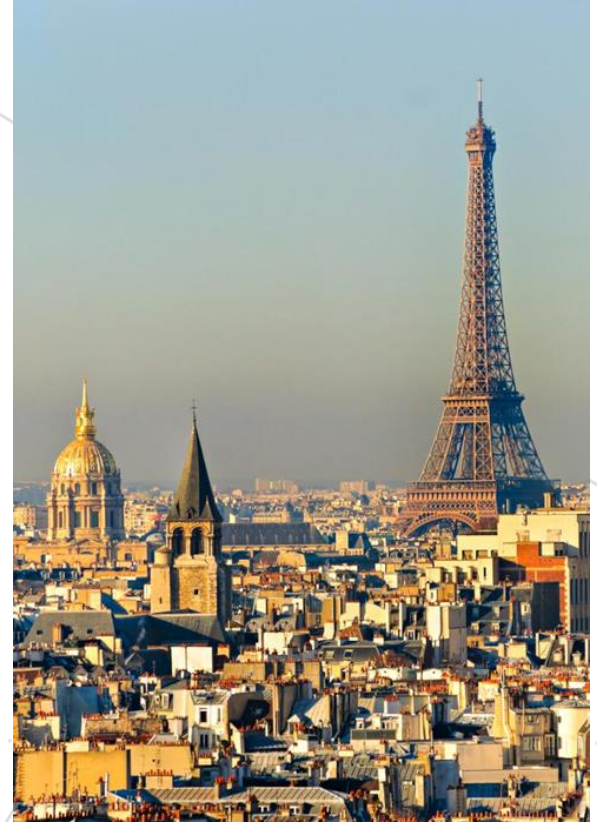
WHY ENTER A DOUBLE DEGREE PROGRAM?

- French engineering schools offer many programs that will have you gain a valuable skillset in your area of choice.
- You get to study in two different countries, master two languages and experience two cultures.
- It enables you to develop your academic and professional networks at the global scale (through internships).
- It gives you an advantage over other candidates for any position / PhD program.
- It is a real asset to work later in a field where international exposure is key.



WHY CHOOSE FRANCE?

- Excellence of the Higher Education system (20% of the national budget is devoted to education)
- French is the 3rd most important language for business in the world after English and Mandarin Chinese
- France is the 7th Economic Power in the World
- The country combines arts, history and quality of life with science, high technology & innovation
- 6th destination in the world for international students
- 9 out of 10 international students recommend France as first study destination



WHY CHOOSE PARIS?

- 8th Named World's Best Student City (QS 2023)
- 6th most innovative city in the World
- 70 000 foreign students (20% of students in Paris area)
- 95 500 researchers
- 816 000 companies & 1/3 of the foreign companies in France
- 1st Region in Europe for R&D



<https://www.topuniversities.com/university-rankings-articles/qs-best-student-cities/paris>
<https://www.topuniversities.com/city-rankings/2023>

WHY IP PARIS?

A MODERN AND GREEN CAMPUS CLOSE TO PARIS



TO STUDY



TO LIVE



TO INNOVATE



EXCELLENCE IN EDUCATION



Excellence since 1741



World's top 50 universities (QS, CWUR)

QS ranking by Subjects :

Maths 14th, Engineering & Tech 21st, Natural Science 26th,
Statistics & Operational research 23^d, Computer Science 31st,
Physics 38th, Electrical & Electronic Eng. 45th, Mechanical Eng. 45th



➤ **95% Employability** rate 4 months after graduation

➤ **QS Graduate employability ranking :**

N°12 World, N°1 France



50 000 euros/year

Average gross **salary** after graduation



30%

international faculty members

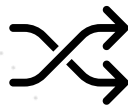


QS GRADUATE
EMPLOYABILITY
RANKINGS



N° 12 WORLD
N° 1 FRANCE

EXCELLENCE IN RESEARCH AND INNOVATION



Cross-disciplinary research



Leader in **world-class research activities**



Close collaboration with **companies**



Top 10 innovation clusters in the world



High level of **entrepreneurship**

THE *DIPLÔME D'INGÉNIEUR*



Bachelor



Cycle ingénieur



Master / MSc&T



PhD / PhD Track



Executive
Master

Mastères
spécialisés

Executive
Education



INSTITUT
POLYTECHNIQUE
DE PARIS



INSTITUT
POLYTECHNIQUE
DE PARIS



3Y

3Y

2Y

2Y
+ 3Y

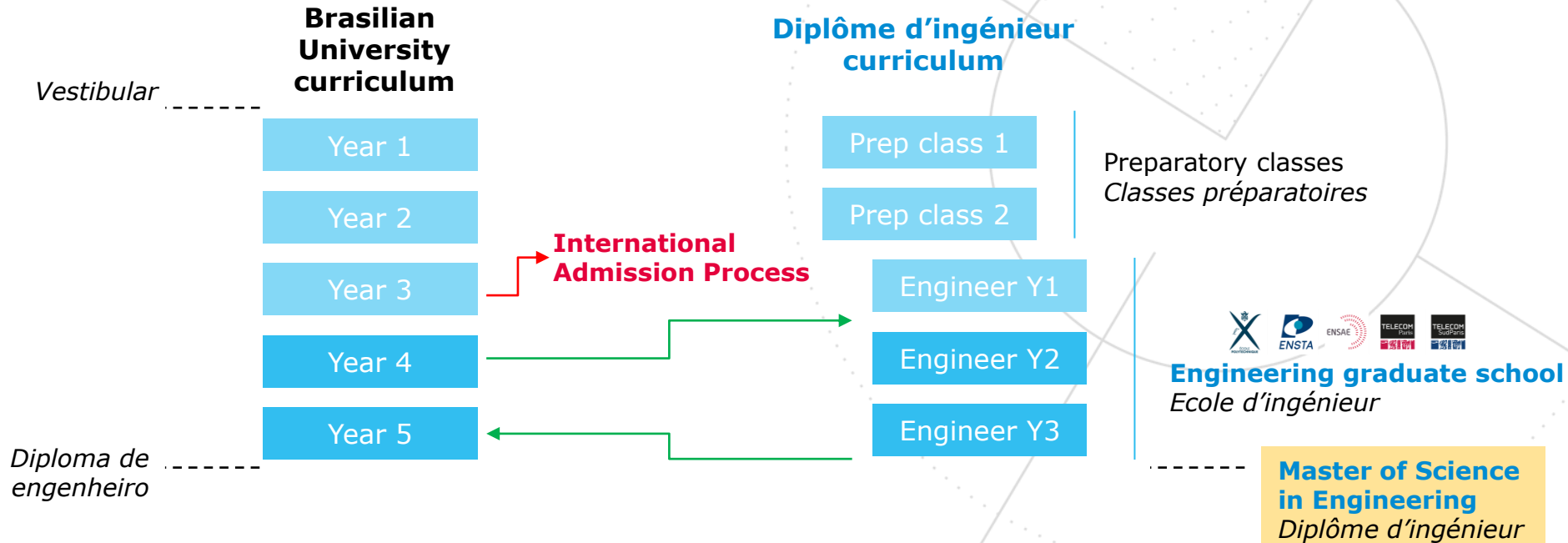
14
M

THE *DIPLÔME D'INGÉNIEUR*

- **Master's Degree** recognized worldwide
- **High level education** based on a highly selective system
- **Multidisciplinary education:**
 - Fundamental sciences: mathematics and physics particularly, chemistry
 - Engineering sciences
 - Economics
 - Business, management, innovation and entrepreneurship
- **Soft skills:** communication, critical thinking, social environment
- **International skills:** languages, geopolitics, mobilities
- **Strong interaction with companies:** several opportunities to carry out internships
- **Personalized curriculum**
- Possible combination with the **PhD-track**



BRAZIL – FRANCE DUAL DEGREE MOBILITY



REQUIREMENTS

- ✓ **Ongoing studies** in Science or Engineering at a partner institution with a double degree agreement with us:



- ✓ Excellent background in **Mathematics, Physics** and **Engineering sciences**
- ✓ **French** or **English** proficiency
- ✓ **Global awareness**
- ✓ **Nomination by your University**

International admission process

- **One Admission process:**

- Online application and nomination by your University : May to September 29
<https://admission.ip-paris.fr/>
- Notification of eligibility: October 6
- Interviews for pre-selected candidates: October 9 to October 31
- Selection of school preferences: November 1 to November 5
- Final acceptance from one school: November 15
- Reception of acceptance letters: December 2023 to March 2024
- Term starts: September 2024

Tuition fees, cost of living and scholarships

Tuition fees per year



Non-EU students		4 650 €	4 550 €	4 550 €
EU students		2 650 €	2 900 €	2 900 €
Dual Degree students		Y1: 1395 € Y2: 1395 €	Y1: 0 Y2: 2 900 €	Y1: 0 Y2: 2 900 €

Estimated cost of living:
900 € / month

- Fees are revised every year by each school and can be subject to modification
- Schools provide scholarships and or tuition fees reductions/exemptions (see websites)
Grants, scholarships or loans can be available based on excellence or social criteria
- Other scholarship programs: **Eiffel excellence scholarships, French Government scholarships** (contact French Embassies), other programs (CSC, BRAFITEC...)
- Internships lasting more than 2 months must be paid.

A MULTIDISCIPLINARY CURRICULUM



Chemistry, Biology and Health				
Economics and Quantitative Sociology	✓			
Actuarial Science	✓			
Energy		✓		
Nuclear Engineering		✓		
Computer Science and Artificial Intelligence	✓	✓	✓	✓
Information and Communication Engineering		✓	✓	✓
Mathematics, statistics, Data Science	✓	✓	✓	✓
Engineering Mechanics		✓		
Physics		✓	✓	✓
Transport, Mobility		✓		
Innovation, Entrepreneurship		✓	✓	✓

And also: Design, Sustainable development

ENSTA PARIS AT A GLANCE

A GRADUATE SCHOOL OF SCIENCE & ENGINEERING



+ **1200**
STUDENTS
825 IN ENGINEERING
231 IN MASTER'S
PROGRAMS
144 PHD



FOUNDED IN
1741



27 %
OF WOMEN



28 %
INTERNATIONAL
STUDENTS



#4
FRENCH NATIONAL
RANKING
« L'ETUDIANT » 2023
#10
RANKING « FIGARO
ETUDIANT » 2023



72
INTERNATIONAL
AGREEMENTS (32 FOR
DOUBLE DEGREE)

2 OFFSHORE
CAMPUSES



110
PARTNER COMPANIES
IN RESEARCH AND
EDUCATION



MORE THAN
10 000
ALUMNI

CUTTING-EDGE RESEARCH



TRANSPORT &
MOBILITY



ENERGY



DEFENSE &
SECURITY



HEALTH

EDUCATION

- Transportation (smart & sustainable Mobility)
- Energy (renewable, nuclear)
- AI & Data, Robotics, Cybersecurity
- Mathematical Engineering (Modeling, finance, optimization, data)

AN ACTIVE STUDENT LIFE

More than **60 student associations and clubs**



Ig: BR.ENSTA

Sport facilities: a new gymnasium (2012) and access to the facilities of the Ecole polytechnique: tennis courts, rugby courts, swimming pool, equestrian center...



On-Campus accommodation: **430 studios**

All international students get an accommodation



ENSTA Paris: ENGINEERING & SCIENCE FOR CHANGE

Thematic specialisation

Y2

One Major (and one Minor)

- **Applied Mathematics**
Mathematical engineering
Mechanical & physical models
- **Computer Science Eng.**
Artificial intelligence & cyberphysics
Software & cyber security
- **Mechanical Engineering**
Sustainable energy
Mechanical modelling
Smart systems
- Research Internship
(10-14 weeks)

Professional specialisation

Y3

One Specialisation + 1 Profile

- Optimization and data sciences
- Modelling & simulation
- Quantitative finance
- Maths for Health & Environment
- Robotics & smart autonomous systems
- Artificial intelligence & Data
- Cybersecurity
- Smart, sustainable mobility and vehicle eng.
- Offshore transport and energy structures
- Sustainable energy: production and optimization
- Nuclear power eng.
- Engineer internship
(22-26 weeks)

Research & Innovation

Project engineer

Entrepreneurship

- Students need to reach B1 level in French by the end of June
- Students arrive in France mid-July for a 4-week intensive French language internship (paid by ENSTA Paris, both course and accommodation)
- Students arrive on the Campus (accommodation on-site) mid-August
- 2-week scientific revisions
- Early September: start of the Academic year

50% TAUGHT BY
EXPERTS FROM
COMPANIES

Culture - Communication - Languages - Applied Economics
Sports - Preparation for professional integration



Telecom Paris

154 professors
1700 students
including 44% international students
18 300 alumni

600 international publications per year
50% of research funded by companies
153 active patents

INNOVATE AND FOSTER ENTREPRENEURSHIP IN A DIGITAL WORLD



www.telecom-paris.fr

We train top level professionals in digital by combining the fields:

- Applied mathematics
- Computer science & engineering
- Physics, electrical engineering
- Economics & social sciences

according to 3 main profiles:

- Transformers
- Entrepreneurs
- Inventors

Our research addresses the major issues of the digital revolution:

- Data science & Artificial intelligence
- Digital trust: cybersecurity, risk, reliability
- Mathematic modeling
- Image and signal processing
- Human-machine interaction
- Internet of things
- Very large networks & systems
- Digital innovation



Telecom Paris

Innovation in training

Project-based teaching methods

Free access spaces: design studio, e-Lab, FabLab

Student innovation events

Nb. 1 public French incubator in digital technology

(since 1999, over 500 start-ups created, 86% in activity, over €1,100M funding raised, over 5,500 jobs created)

Close links with industry

More than 300 partner companies

15 teaching and research chairs

8 joint laboratories

500 guest speakers from the business world

100+ activities with companies for students



An internationalized graduate school

100+ partners in 39 countries

42 dual degree agreements in 18 countries

34% of international professors

27% of 1st jobs abroad

1 international shared campus in Shanghai: SPEIT

programs taught in English

*Diplôme ingénieur
Post-master*

The French leading graduate school in ICT

Awarded professors: ERC starting & consolidator, best scientific paper, edX Prize, etc.
Famous Alumni : UBER, SIRI, LinkedIn, Google TV, ALTICE, Nao and Pepper robots

French rankings in 2022

2^d in general ranking of engineering graduate schools

1st for: links with companies and industrials, international connections, salaries of first job after school...

Grafton Architects, Pritzker Prize 2020



Engineer curriculum at Telecom Paris

YEAR 2

A tailor-made Program

Courses

- 2x192h : 2 study tracks
- Scientific and Technical courses
- Personal & professional skills courses
- Projects
- Social Sciences
- Languages (2 to 3)
- Athens week

+

**1 to 2 month internship
(Non mandatory)**

www.telecom-paris.fr

- 🇬🇧 Data Science
- 🇬🇧 Signal Processing for Artificial Intelligence
- 🇫🇷 Image
- 🇬🇧 Stochastic processes and scientific computing
- 🇬🇧 Applied Algebra : Cryptography, Quantum information, Coding theory
- 🇫🇷 Mathematics, Theoretical Computer Science and Operation Research
- 🇫🇷 Embedded Systems
- 🇬🇧 Distributed Software Systems
- 🇫🇷 3D & Interactive systems
- 🇫🇷 Infrastructures and Networks Security
- 🇫🇷 Large Digital Infrastructures
- 🇫🇷 Telecom: from data to systems
- 🇫🇷 Wireless networks and IoT
- 🇫🇷 Markets, Organizations, Data, Strategies
- 🇬🇧 Markets, Organizations, Data, Strategies

YEAR 3

A career Preparation

- **Technological innovation**
 - 1 study track
 - + a Research & Innovation Project
 - + complementary elective courses (sciences, languages, humanities, etc.)

Areas of specialization:

- AI, Image and Data Sciences
- Fundamentals of Mathematics & Computer Science
- Networks, IOT and Cybersecurity
- Digital systems
- Innovation
- ...

OR

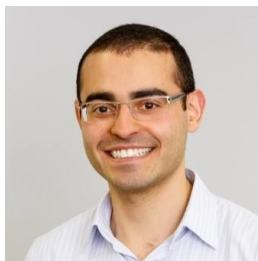
- **Dual Degree of Science and Engineering**
 - Master degree with a French leading partner institution

+

6 month internship

• A global Alumni Network : ENSTA Paris Alumni

A Wide Variety of Career Paths



Rogério
Salloum (2009)



**Co-Founder &
CEO at
PiezoRobotics,
Singapore**

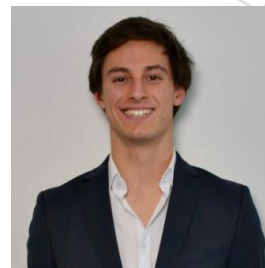


Luis Benetti
Ramos
(2017)



**Sales manager,
Wind Energy at
Nordex, Paris**

Entrevista : <https://youtu.be/i9Mix5-hwSM>



Pedro Ziebell
Ramos (2019)



**Software
development
specialist at SAP
Data Warehouse
Cloud, Porto
Alegre**



Isabelle Elisie da
Silva Santos
(2020)



**Senior Business
Analyst at
Kearney, Sao
Paulo**

A global Alumni Network : Telecom Paris Alumni

A Wide Variety of Career Paths



Vitor Garcia
Bacetti (2010)



**Group Product
Manager
Google Play
New York
USA**



Ermínio da Cas
Neto
(2012)



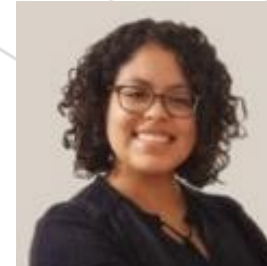
**Manager
Deloitte
Rio de Janeiro**



Isabela Merath
Gomide (2013)



**Product Owner
Engie Brasil
São Paulo**



Renata
Porciuncula
Baptista (2019)



**R&D Engineer
Wavelight GmbH
Berlin
Germany**

<https://www.telecom-paris.fr/en/international/international-students>

Questions and answers

www.ip-paris.fr

<https://admission.ip-paris.fr/>

dd-admission@ip-paris.fr



Institut Polytechnique de Paris



Institut Polytechnique de Paris



@IP__Paris



Institut Polytechnique de Paris

